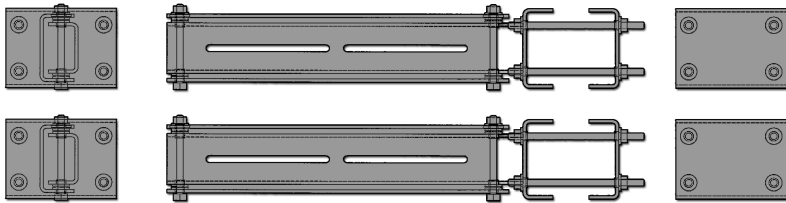


DUAL RRU MOUNT
D220RRUDSM

LOW PIM UNIVERSAL REMOTE RADIO HEAD DUAL SWIVEL MOUNT.
FITS ROUND LEGS 2-3/8" TO 4-1/2" ANGLE UP TO 3" X 3"



Dimensions

| | |
|--------|-----------------------|
| Height | 101.60 mm 4.0 in |
| Length | 565.15 mm 22-3/4 in |
| Width | 165.10 mm 6-1/2 in |
| Weight | 21.6 lbs |

General Specifications

| | |
|---------------|--------------------|
| Material Type | Steel |
| Finish | Hot Dip Galvanized |

Mounting

| | |
|----------------|----------------------------------------------------------------------------------------------------------------|
| Mounting Type | Angle Member Round Member |
| Mounting Range | 60 Deg Angle Legs: 1 in to 5 in 90 Deg Angle Legs: 1 in to 3 1/2 in Fits Round Legs: 1-1/2 in to 5 in OD |
| Torque | 25 ft-lbs |

Packaging

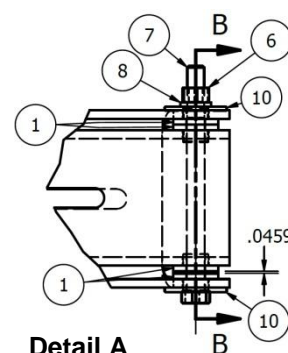
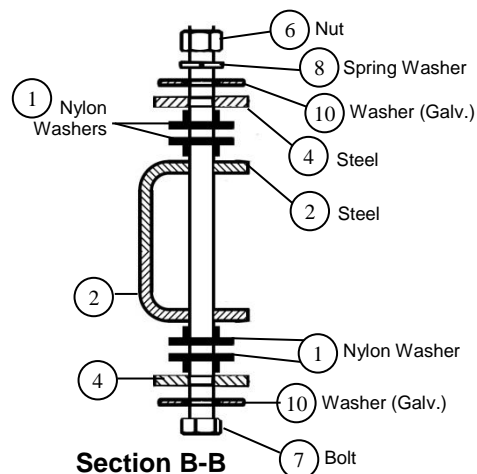
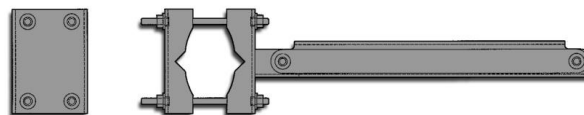
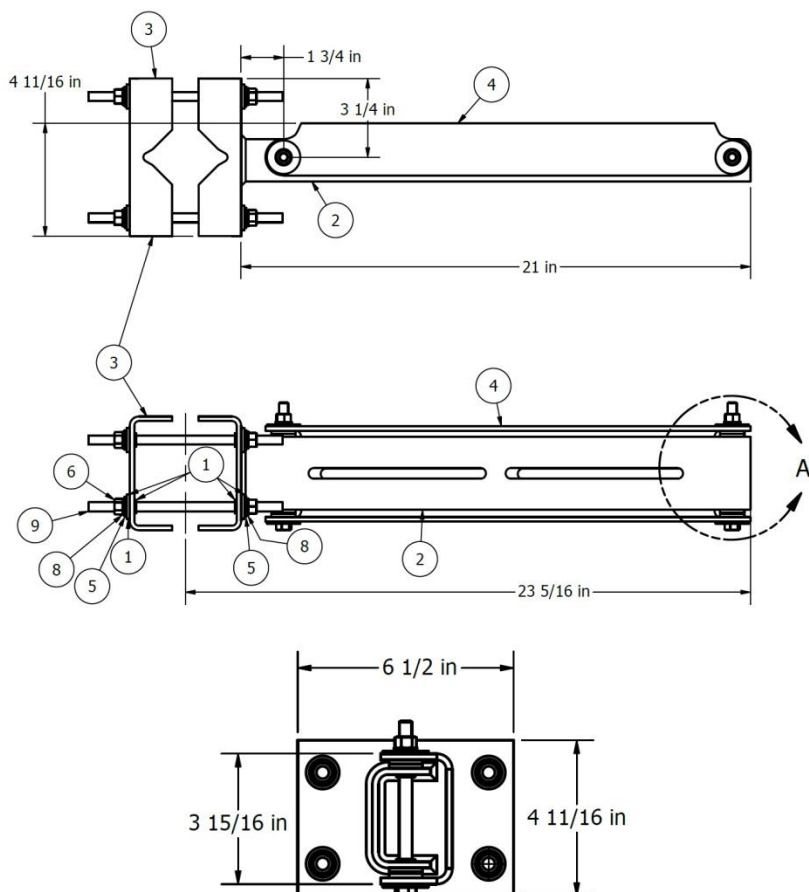
| | |
|------------------|-------|
| Package Quantity | 1 Kit |
|------------------|-------|

NOTE
Installation of this product should only be performed by trained, qualified and experienced personnel. Installation instructions for this product should be read thoroughly before installation is performed. The manufacturer and supplier of this product disclaims any liability or responsibility for the results of improper or unsafe installation practice.

When installed properly, this product meets the requirements for installation in High Risk PIM Zones. Static and dynamic testing was conducted per IEC 46/666 "Passive RF and Microwave Devices, Intermodulation Level Measurement", "Part 8: Measurement of passive intermodulation generated by objects exposed to RF radiation" and IEC 62037-1.

D220RRUDSM

DUAL RRU MOUNT



| PARTS LIST | | | |
|------------|----------------------|---------------------------|---------------------------------------------------|
| ITEM | QUANTITY PER BRACKET | TOTAL QUANTITY REQUIRED * | DESCRIPTION |
| 1 | 16 | 32 | NYLON SHOULDER WASHER |
| 2 | 1 | 2 | MOUNTING ARM WELDMENT |
| 3 | 1 | 2 | BENT CLAMP PLATE |
| 4 | 1 | 2 | SWIVEL MOUNT PLATE |
| 5 | 8 | 16 | 3/8" DIA. GALVANIZED WASHER |
| 6 | 10 | 20 | 3/8" DIA. GALVANIZED NUT |
| 7 | 2 | 4 | 3/8" DIA. X 5" LONG A-307 GRADE C GALVANIZED BOLT |
| 8 | 10 | 20 | 3/8" DIA. GALVANIZED SPRING WASHER |
| 9 | 4 | 8 | 3/8" DIA. X 8" LONG A-36 THREADED ROD |
| 10 | 12 | 24 | 3/8" DIA. F436 GALVANIZED WASHER |

* TWO BRACKETS ARE REQUIRED TO SUPPORT (2) RRU ASSEMBLIES

When installed properly, this product meets the requirements for installation in High Risk PIM Zones. Static and dynamic testing was conducted per IEC 46/666 "Passive RF and Microwave Devices, Intermodulation Level Measurement", "Part 8: Measurement of passive intermodulation generated by objects exposed to RF radiation" and IEC 62037-1.

Corporate Headquarters

Rosenberger Hochfrequenztechnik GmbH & Co. KG
P.O. Box 1260 D-84526 Tittmoning Germany

Rosenberger Site Solutions, LLC

102 Dupont Dr.
Lake Charles, LA 70607

Phone: (337)598-5250

Fax: (337) 598-5290

Web: www.Rosenberger Online.us

Version 111619