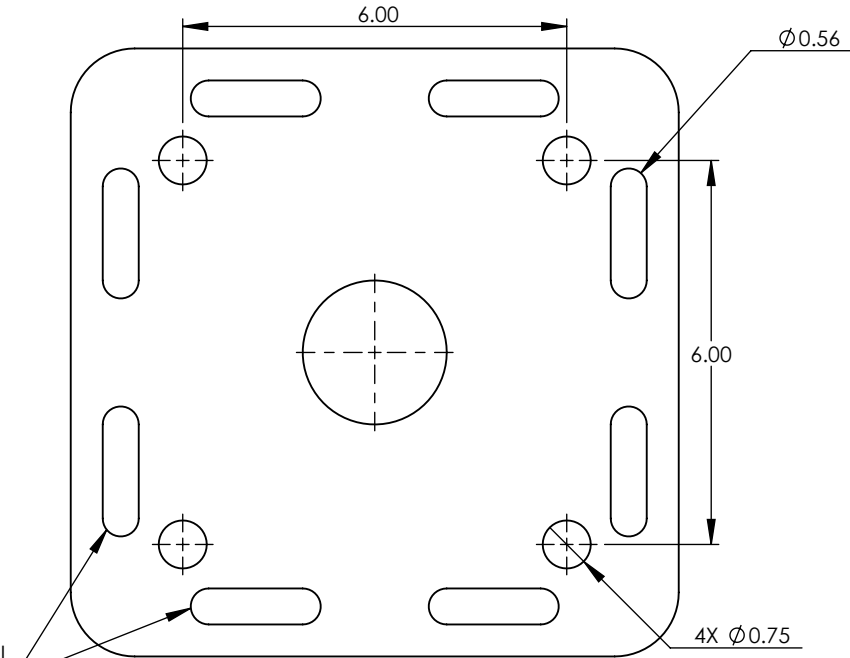
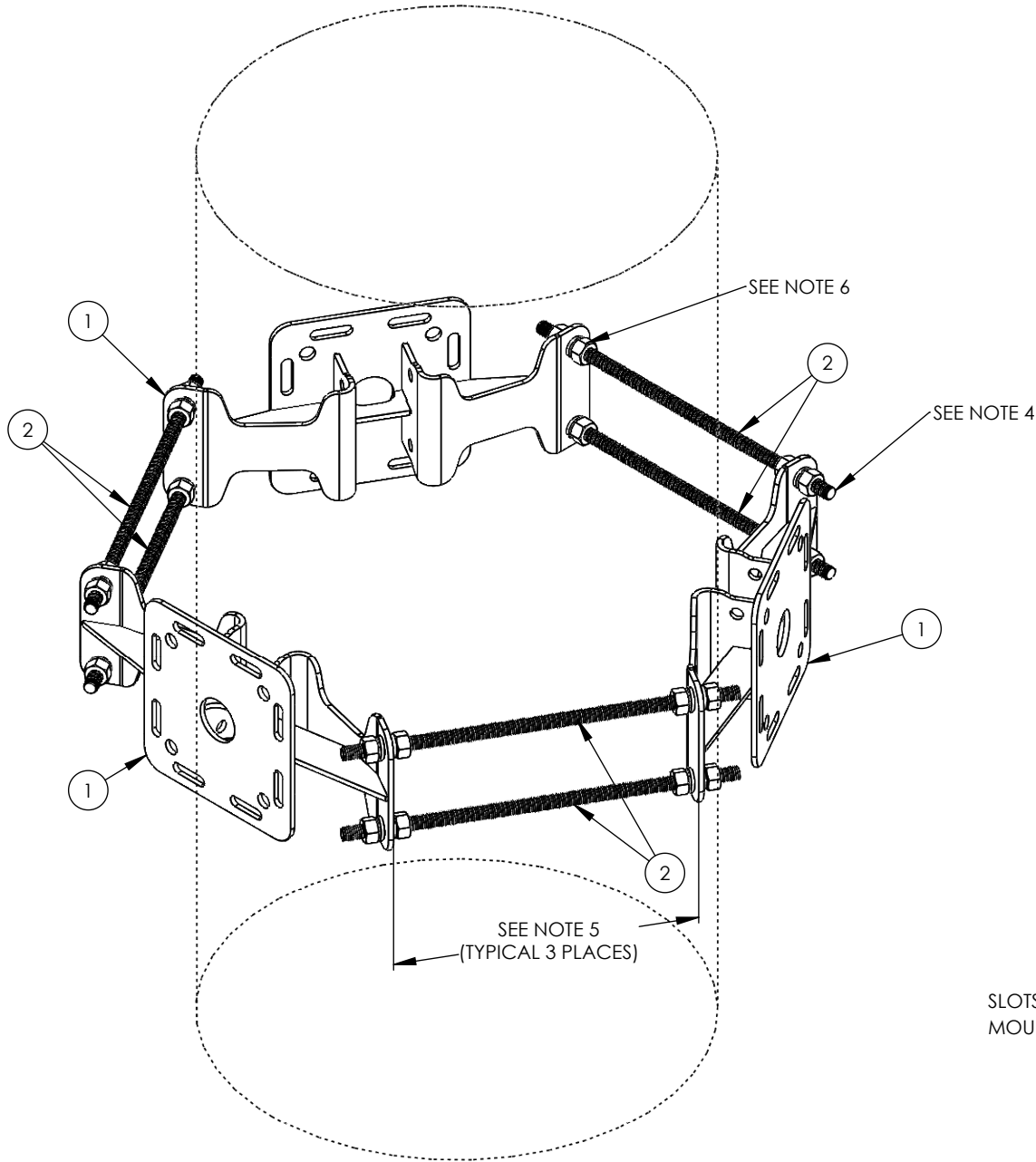


| ITEM NO. | PART NUMBER | DESCRIPTION  | QTY. | WEIGHT |
|----------|-------------|--|------|--------|
| 1        | CW01452     | MD BASE COLLAR WELDMENT                                    | 3    | 45.9   |
| 2        | C40094007   | THREADED ROD ASSY 5/8" X 36" A35 - (1) ROD (4) NUTS (4) LW | 6    | 8.4    |


Distributed By  
**Rosenberger**  
Rosenberger Site Solutions, LLC  
visit [www.RosenbergerOnline.us](http://www.RosenbergerOnline.us)



FACE MOUNTING DETAILS

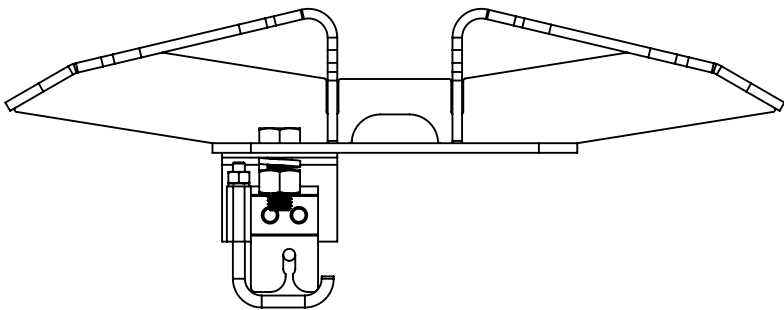
- NOTES:
- 1. FITS 10" - 34" POLES
  - 2. SMALL POLE ADD ON, C10112555, AVAILABLE TO FIT DOWN TO 4.5" OD POLES SOLD SEPERATELY
  - 3. EXTENSION ADD ON KIT, C10112553, AVAILABLE TO FIT UP TO 44" OD POLES SOLD SEPERATELY
  - 4. THREADED ROD MAY BE SHORTENED IF REQUIRED, FIELD CUT AND COLD GALV SPRAY TO SUIT
  - 5. THIS DISTANCE MUST BE EQUAL IN ALL (3) THREE LOCATIONS TO ENSURE THE STRUCTURAL INTEGRITY OF THE THREADED RODS AS WELL AS 120° SEPERATION.
  - 6. THE NUTS ON THE INSIDE ARE NOT TO BE TIGHTENED UNTILL ALL OUTSIDE NUTS ARE TIGHTENED.

| REVISIONS |                            |          |          |
|-----------|----------------------------|----------|----------|
| REV.      | DESCRIPTION                | DATE     | APPROVED |
| A         | INITIAL PRODUCTION RELEASE | 7/7/2020 | KK       |

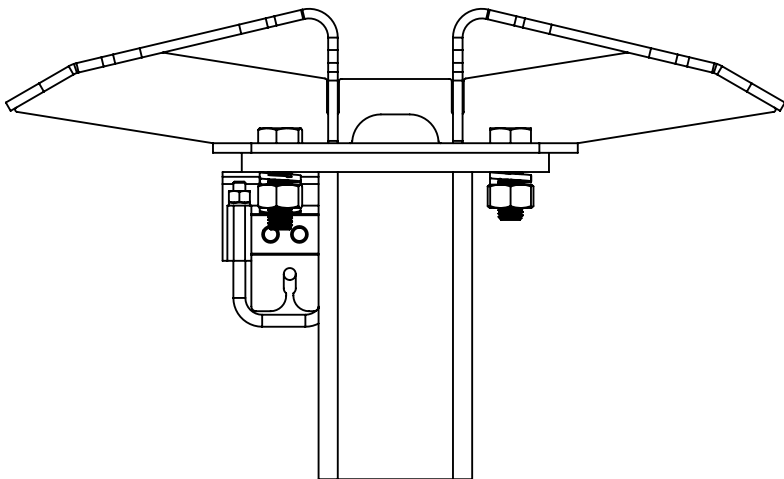
|   |  |                      |  |  |                       |  |  |  |                 |  |  |
|---|--|----------------------|--|--|-----------------------|--|--|--|-----------------|--|--|
| UNLESS OTHERWISE SPECIFIED<br>ALL DIMENSIONS INCLUDE<br>FINISHES AND ARE IN INCHES  |  | DO NOT SCALE DRAWING |  | <br><b>Sabre Industries™</b><br><br><u>CONFIDENTIAL INFORMATION</u><br><br>THIS DOCUMENT AND THE INFORMATION CONTAINED HEREIN IS THE CONFIDENTIAL TRADE SECRET PROPERTY OF SABRE COMMUNICATIONS CORPORATION ("SABRE") AND MUST NOT BE REPRODUCED, COPIED OR USED, IN WHOLE OR IN PART, FOR ANY PURPOSE WITHOUT THE PRIOR WRITTEN CONSENT OF SABRE.<br><br>© 2017 SABRE COMMUNICATIONS CORPORATION. ALL RIGHTS RESERVED. | 7/7/2020              |  | PART # C10112530   |  | REV 0           |  |  |
| TOLERANCES  |  | NOTES                |  |  | WEIGHT (LBS)          |  | DESCRIPTION<br><br>MD TRI-COLLAR FITS<br>10" TO 34" OD POLES |  |                 |  |  |
| MATERIAL THICK. ≤ 0.25" > 0.25"   |  |                      |  |  | 54.5                  |  |  |  |                 |  |  |
| FRACTIONS ± 1/32 ± 1/16<br>ANGLES ± 1/2 ° ± 1/2 °<br>DECIMALS ± 0.010 ± 0.010   |  |                      |  |  | DRAWN BY:<br><br>KK   |  |  |  |                 |  |  |
| FORMED PARTS<br>HOLE TO EDGE ± 0.016 ± 0.031<br>BEND TO BEND ± 0.020 ± 0.040<br>MULTI BEND-TO-HOLE ± 0.031 ± 0.063<br>BREAK ALL SHARP CORNERS & EDGES |  | PAINT<br>SEE P.O.    |  |  | Modeled By:<br><br>KK |  | LEGACY #   |  | SHEET OF<br>1 2 |  |  |
|   |  | FINISH               |  |  |                       |  |  |  |                 |  |  |

OPTIONAL LOCKING CABLE GUIDE  
IF REQUIRED PLEASE ORDER PART NUMBER C30017023 OR C30017024 DEPENDING ON USE. SEE BELOW FOR DETAILS.  
C30017023 INCLUDES (1) LOCKING GUIDE AND (1) 5/8" X 1 3/4" BOLT ASSEMBLY.  
C30017024 INCLUDES (1) LOCKING GUIDE WITH 6" THREADED STUD AND (2) NUTS.

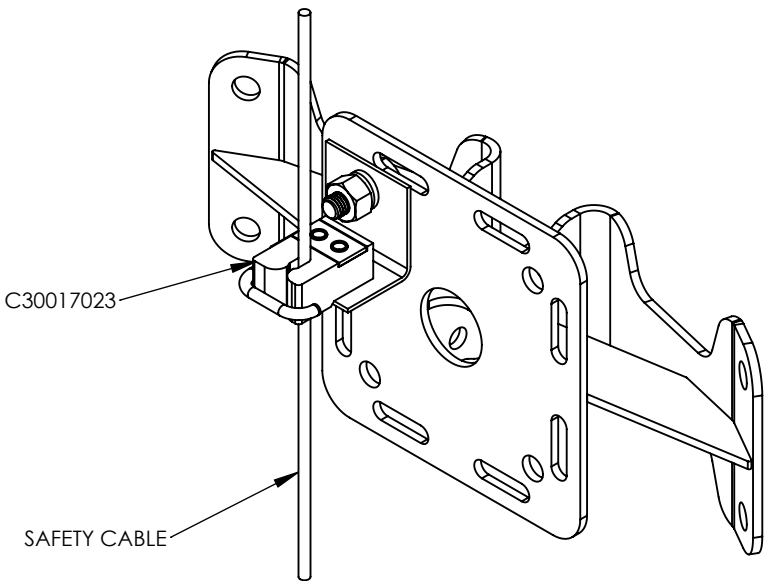
(OPTIONAL) C30017023



BARE COLLAR

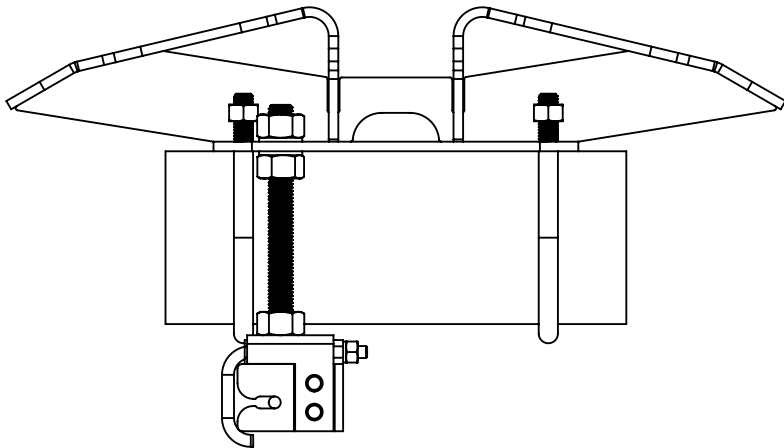


COLLAR WITH STANDOFF

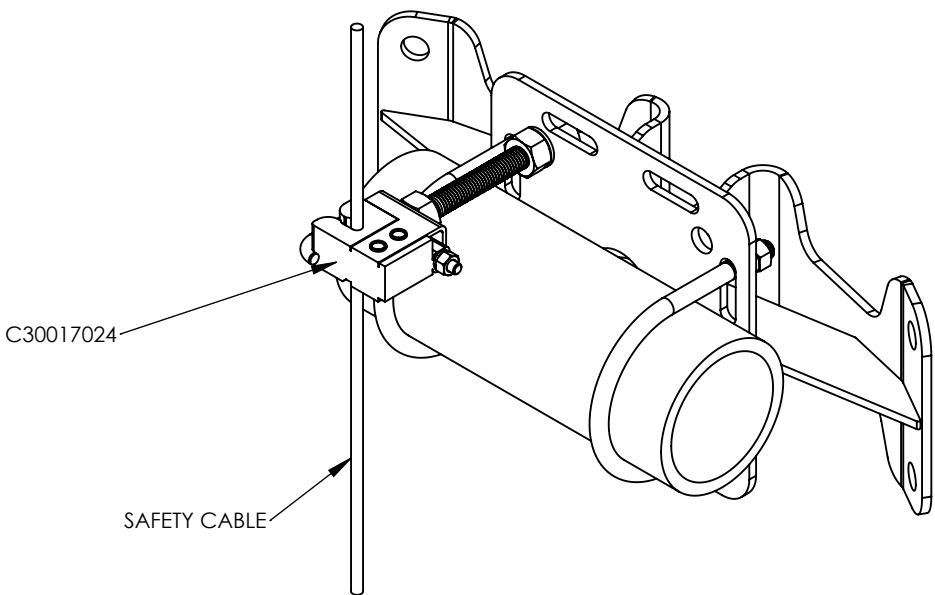


ISOMETRIC VIEW

(OPTIONAL) C30017024




COLLAR WITH UP TO 4 1/2" OD PIPE MOUNTED HORIZONTALLY OR VERTICALLY



ISOMETRIC VIEW

NOTES:  
OTHER ADDITIONAL CABLE GUIDE SUPPORTS MAY BE REQUIRED ABOVE AND BELOW COLLAR SO THAT CABLE ALIGNMENT IS WITHIN REQUIRED LIMITS.

|  |  |  |                      |  |   |              |  |   |     |          |  |  |
|--|--|--|----------------------|--|---|--------------|--|---|-----|----------|--|--|
| UNLESS OTHERWISE SPECIFIED<br>ALL DIMENSIONS INCLUDE<br>FINISHES AND ARE IN INCHES |  |  | DO NOT SCALE DRAWING |  | <br><b>Sabre Industries™</b><br><br><u>CONFIDENTIAL INFORMATION</u><br><br>THIS DOCUMENT AND THE INFORMATION<br>CONTAINED HEREIN IS THE CONFIDENTIAL TRADE<br>SECRET PROPERTY OF SABRE COMMUNICATIONS<br>CORPORATION ("SABRE") AND MUST NOT BE<br>REPRODUCED, COPIED OR USED, IN WHOLE OR<br>IN PART, FOR ANY PURPOSE WITHOUT THE PRIOR<br>WRITTEN CONSENT OF SABRE.<br><br>© 2017 SABRE COMMUNICATIONS<br>CORPORATION. ALL RIGHTS RESERVED. | 7/7/2020     |  | PART # C10112530                                      |     | REV 0    |  |  |
| TOLERANCES   |  |  | NOTES                |  |   | WEIGHT (LBS) |  | DESCRIPTION<br>MD TRI-COLLAR FITS 10" TO 34" OD POLES |     |          |  |  |
| MATERIAL THICK. ≤ 0.25" > 0.25"  |  |  | PAINT<br>SEE P.O.    |  |   | 54.5         |  |   |     |          |  |  |
| FRACTIONS ± 1/32 ± 1/16  |  |  |                      |  |   |              |  |   |     |          |  |  |
| ANGLES ± 1/2 ° ± 1/2 °   |  |  |                      |  |   |              |  |   |     |          |  |  |
| DECIMALS ± 0.010 ± 0.010   |  |  |                      |  |   |              |  |   |     |          |  |  |
| FORMED PARTS   |  |  | FINISH               |  |   | DRAWN BY:    |  | KK  |     |          |  |  |
| HOLE TO EDGE ± 0.016 ± 0.031   |  |  |                      |  |   | Modeled By:  |  | LEGACY #  |     | SHEET OF |  |  |
| BEND TO BEND ± 0.020 ± 0.040   |  |  |                      |  | KK  |              |  |   | 2 2 |          |  |  |
| MULTI BEND-TO-HOLE ± 0.031 ± 0.063   |  |  |                      |  |   |              |  |   |     |          |  |  |
| BREAK ALL SHARP CORNERS & EDGES  |  |  |                      |  |   |              |  |   |     |          |  |  |