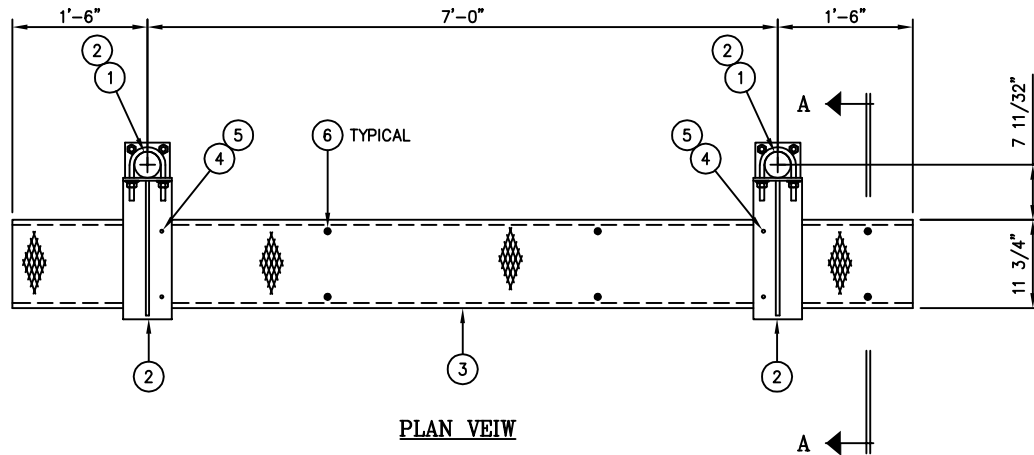


SECTION A-A



PLAN VIEW

NOTE:

THIS WAVEGUIDE BRIDGE ASSEMBLY IS NOT DESIGNED TO SUPPORT PERSONNEL OR EQUIPMENT.

C20136023 GRIP STRUT WAVEGUIDE BRIDGE KIT

ITEM	QTY.	PART. NO.	DESCRIPTION	WEIGHT
1.	2	C20139003	WAVEGUIDE BRIDGE POST W/PIPE CAP & ANCHORS	178.8#
2.	2	C20140010	WAVEGUIDE BRIDGE SUPPORT ARM W/U-BOLTS	20.8#
3.	1	C20137001	GRIP STRUT WAVEGUIDE BRIDGE, 11 3/4" X 10'-0"	44.0#
4.	4	C40012017	STAINLESS STEEL BOLT ASSY, 3/8 X 2	0.4#
5.	8	C40046001	FENDER WASHER, 7/16 I.D. X 1 1/2 O.D.	0.4#
6.	3	C20145001	SINGLE LEVEL TRAPEZE KIT	9.0#
TOTAL WEIGHT				253.4#

UNLESS OTHERWISE SPECIFIED
ALL DIMENSIONS INCLUDE
FINISHES AND ARE IN INCHES
TOLERANCES: FRACTIONS $\pm 1/16"$
ANGLES $\pm 1/2$ DEG.
DECIMALS $\pm .010"$

MATERIAL:
TOLERANCES DO NOT APPLY
TO RAW MATERIAL



CONFIDENTIAL
This document and the information
contained herein is the confidential trade
secret property of Sabre Communications
Corporation ("Sabre") and must not be
reproduced, copied or used, in whole or in
part, for any purpose without the prior
written consent of Sabre.
© 2006 Sabre Communications Corporation.
All rights reserved.

**GRIP STRUT WAVEGUIDE BRIDGE
WITH 10'-6" BASE PLATE COLUMNS
(11 3/4" WIDE X 10'-0")
SINGLE LEVEL TRAPEZE**

REV	DATE	DRW/CHK	DESCRIPTION

DATE	6/6/03	SIZE	B	DRAWING NO.	C20136023	REV	0
DRAWN BY	KLE			SCALE	None	PAGE	1 OF 1
CHECKED BY	PSB						