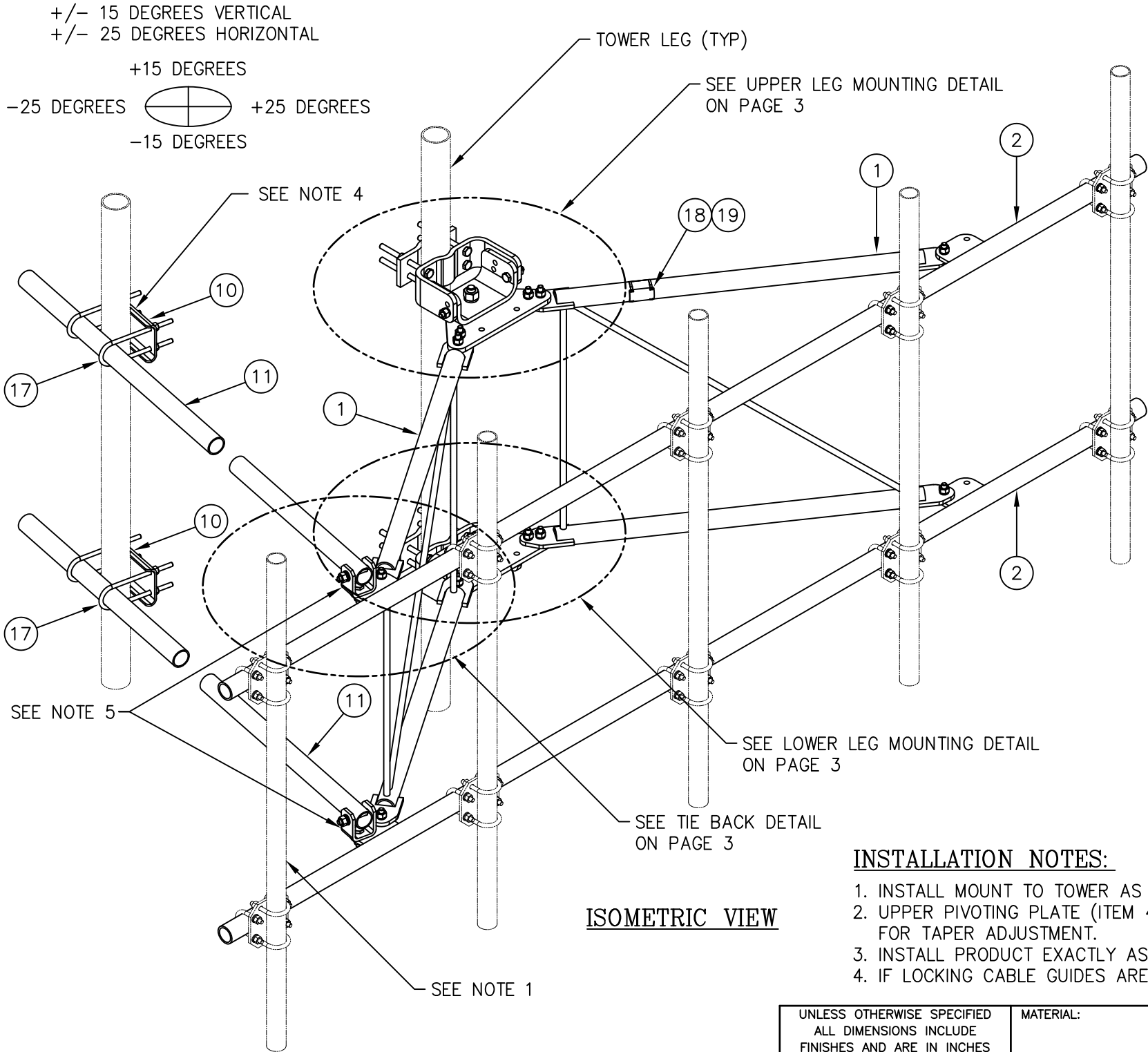


TIEBACK ANGLE RANGE DETAIL



NOTES:

1. MOUNTING PIPES & CROSSOVER PLATE KITS MUST BE PURCHASED SEPARATELY.
2. QUANTITIES SHOWN IN LISTS OF MATERIAL ARE FOR ONE (1) V-BOOM ONLY.
3. THIS V-BOOM WILL MOUNT TO THE FOLLOWING: 1 1/2"Ø TO 5 9/16"Ø ROUND LEG.
4. TIEBACKS MUST BE CONNECTED TO A RIGID MEMBER THAT PROVIDES ADEQUATE SUPPORT WITHIN THE LIMITS NOTED ABOVE IN THE TIEBACK ANGLE RANGE DETAIL UNLESS APPROVED BY THE ENGINEER OF RECORD.
5. THE TIEBACK IS SHOWN IN THIS POSITION AS A DEFAULT. THIS TIEBACK CAN BE CONNECTED AT ANY (2) OF THE (4) POSITIONS ON THE TABS ON THE FACE PIPE.

INSTALLATION NOTES:

1. INSTALL MOUNT TO TOWER AS SHOWN, SO THAT WELDED STANDOFF DIAGONAL IS SLOPING DOWNWARD FROM TOWER END TO FACE PIPE END.
2. UPPER PIVOTING PLATE (ITEM 4) HAS THREE HOLES ON EACH SIDE AND UPPER LEG CLAMP PLATE (ITEM 5) HAS TWO HOLES ON EACH SIDE FOR TAPER ADJUSTMENT.
3. INSTALL PRODUCT EXACTLY AS SHOWN IN DRAWING, WITH ALL BOLTS FACING UPWARDS.
4. IF LOCKING CABLE GUIDES ARE REQUIRED THEY MUST BE PURCHASED SEPARATELY (SEE PAGE 4).

C10857007C 12' EHD V-BOOM ASSEMBLY W/TIEBACKS

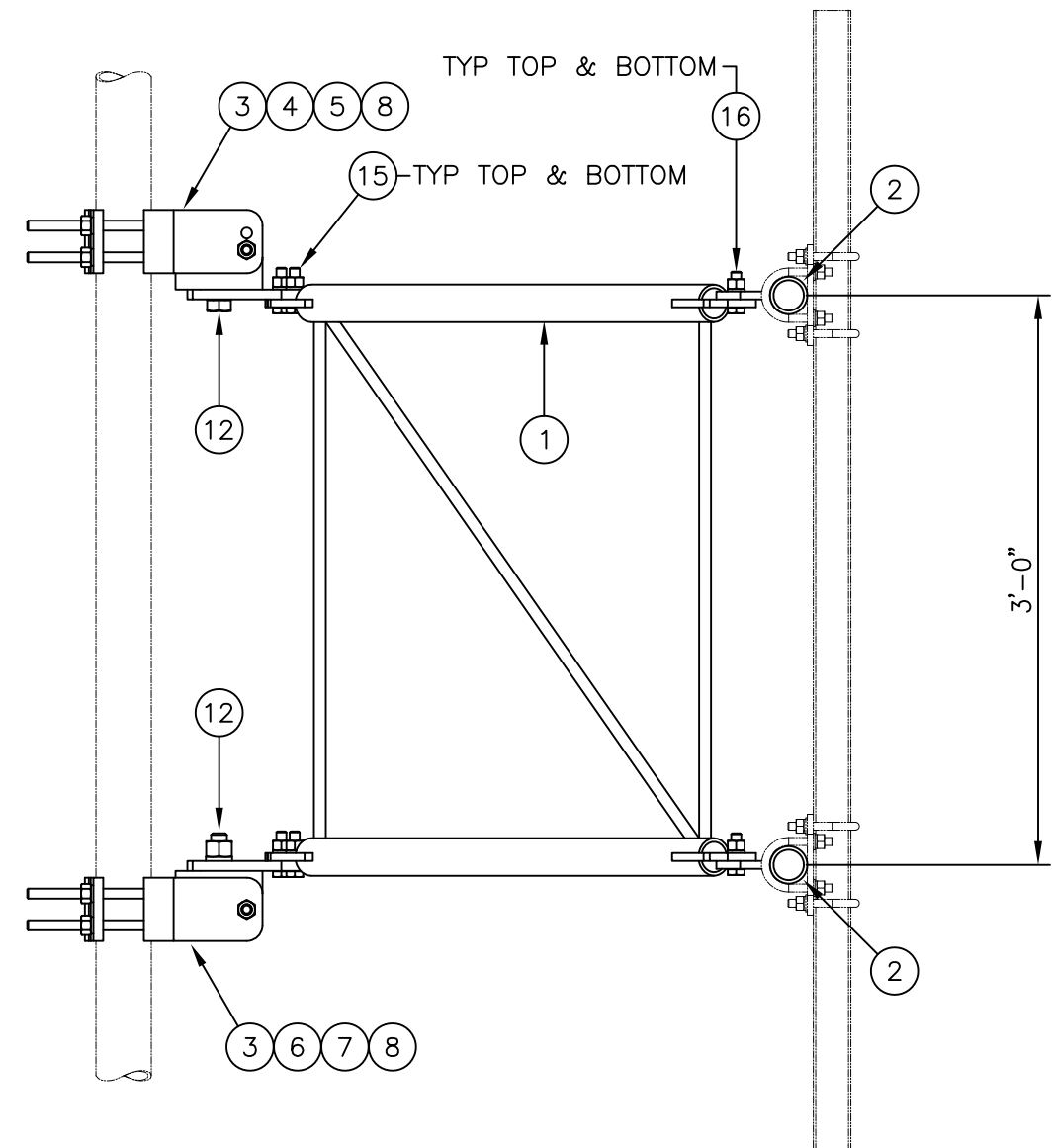
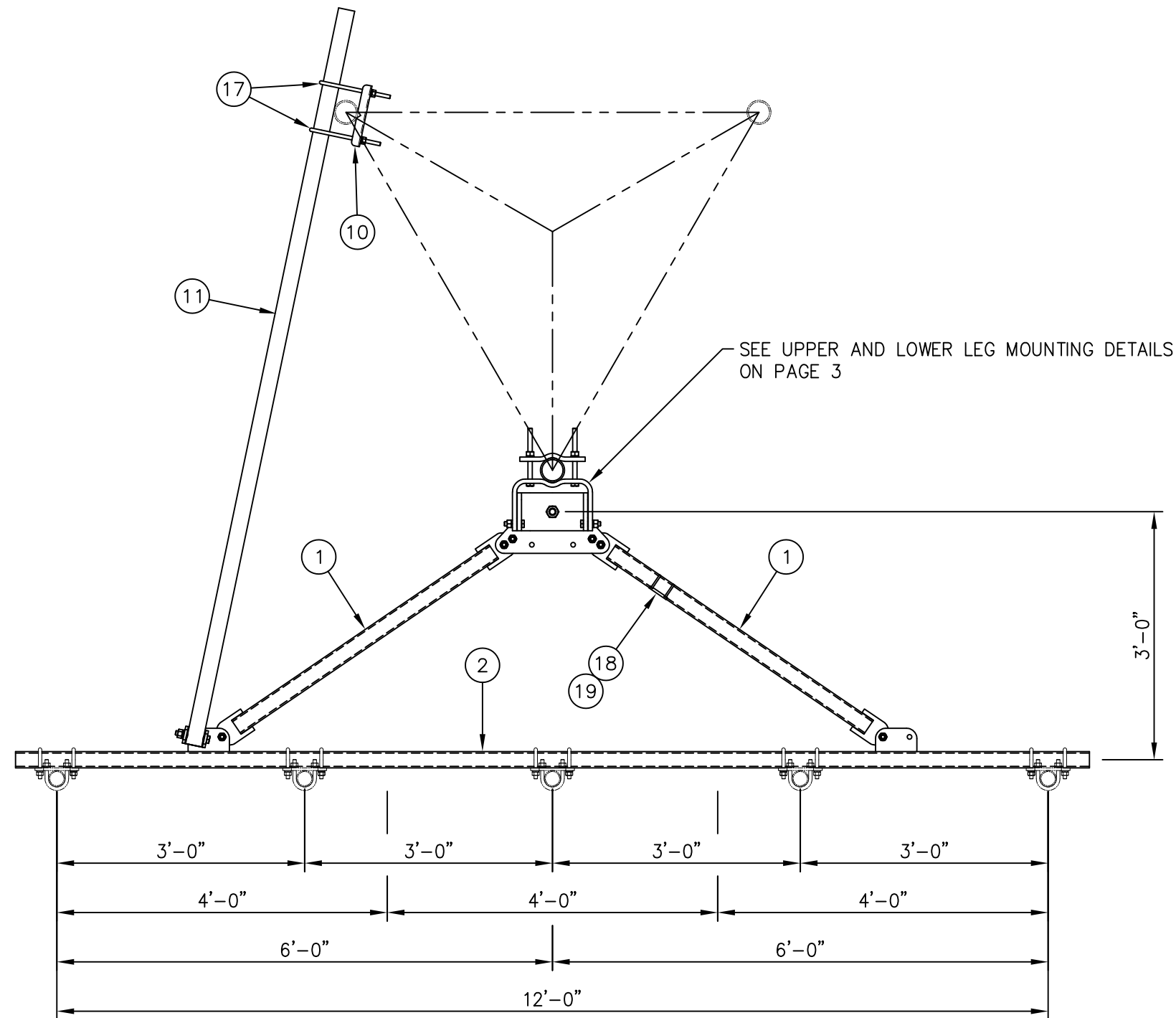
ITEM	QTY.	PART NO.	DESCRIPTION	WEIGHT
1.	2	CW01222	WELDMENT, STANDOFF ARM	126
2.	2	CW01223	WELDMENT, FACE PIPE	147
3.	2	CS03109	PLATE, ROTATING	34
4.	1	CS03110	PLATE, PIVOTING (UPPER)	16
5.	1	CS03111	PLATE, LEG CLAMP (UPPER)	17
6.	1	CS03112	PLATE, PIVOTING (LOWER)	14
7.	1	CS03113	PLATE, LEG CLAMP (LOWER)	17
8.	2	CS03114	PLATE, LEG CLAMP (BACK)	14
9.	2	CS00098	PLATE, TIE BACK SWIVEL	5
10.	2	CS03285	PLATE, TIE BACK CLAMP	9
11.	2	CS03333	PIPE, TIE BACK	76
12.	2	C40026073	BOLT ASSEMBLY, 1 Ø X 3 A325	4
13.	8	C40140004	BOLT ASSEMBLY, 5/8 Ø X 8 A307	13
14.	2	C40026033	BOLT ASSEMBLY, 5/8 Ø X 4 1/2 A325	2
15.	12	C40026025	BOLT ASSEMBLY, 5/8 Ø X 2 1/2 A325	6
16.	6	C40026024	BOLT ASSEMBLY, 5/8 Ø X 2 1/4 A325	3
17.	4	C40034183	U-BOLT ASSEMBLY, 1/2 Ø X 2 9/16 C-C	6
18.	1	Z30992017	MOUNT CLASSIFICATION TAG C10857007C	1
19.	2	C40062103	STAINLESS STEEL SELF-LOCKING CABLE TIE	1
TOTAL WEIGHT				511

PACKAGING NOTE

CK00386 INCLUDES ITEMS 1, 3, 4, 5, 6, 7, 12 & 15 (8 QTY)
CK00392 INCLUDES ITEMS 2, 8, 9, 10, 11, 13, 14, 15 (4 QTY), 16, 17, 18 & 19

Distributed By
Rosenberger
Rosenberger Site Solutions, LLC
visit www.RosenbergerOnline.us

UNLESS OTHERWISE SPECIFIED ALL DIMENSIONS INCLUDE FINISHES AND ARE IN INCHES					MATERIAL:					<div>Sabre Industries™ Towers and Poles</div>					12' EHD V-BOOM ASSEMBLY W/TIEBACKS (3' STANDOFF) W/NO ANTENNA MOUNTING PIPES									
TOLERANCES: FRACTIONS ± 1/16" ANGLES ± 1/2 DEG. DECIMALS ± .010"					TOLERANCES DO NOT APPLY TO RAW MATERIAL																			
										<div>CONFIDENTIAL</div> <p>This document and the information contained herein is the confidential trade secret property of Sabre Communications Corporation ("Sabre") and must not be reproduced, copied or used, in whole or in part, for any purpose without the prior written consent of Sabre.</p> <p>© 2016 Sabre Communications Corporation. All rights reserved.</p>							SIZE		DRAWING NO.				REV	
															B		C10857007C				2			
2		04/28/20		KLE		EK		ADDED NOTE 5 TO GENERAL NOTES.							DATE		02/29/16							
								ADDED NOTE 4 TO INSTALLATION NOTES AND ADDED PAGE 4							DRAWN BY		WRF							
1		10/19/16		KLE		DEL		ADDED INSTALLATION NOTES							CHECKED BY		KLE							
REV		DATE		DRW		CHK		DESCRIPTION											SCALE		PAGE			
																			None		1 OF 4			



SIDE VIEW

MOUNTING OPTIONS SHOWING MOUNTING PIPE PLACEMENTS

UNLESS OTHERWISE SPECIFIED ALL DIMENSIONS INCLUDE FINISHES AND ARE IN INCHES				MATERIAL:	
TOLERANCES: FRACTIONS $\pm 1/16"$ ANGLES $\pm 1/2$ DEG. DECIMALS $\pm .010"$				TOLERANCES DO NOT APPLY TO RAW MATERIAL	
REV	DATE	DRW	CHK	DESCRIPTION	
2	04/28/20	KLE	EK	ADDED NOTE 5 TO GENERAL NOTES.	
1	10/19/16	KLE	DEL	ADDED NOTE 4 TO INSTALLATION NOTES AND ADDED PAGE 4	
				ADDED INSTALLATION NOTES	

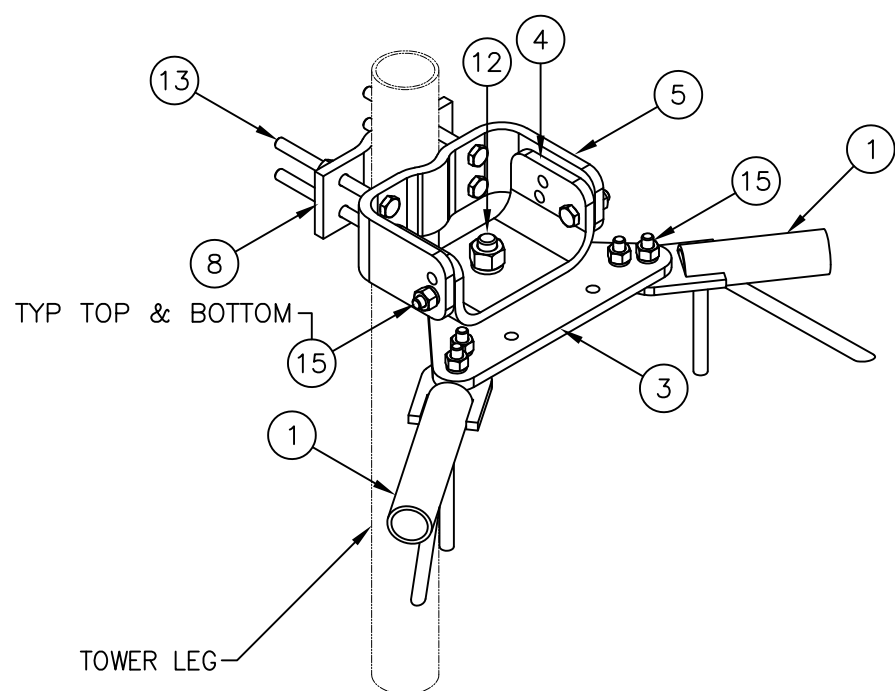
Sabre Industries™
Towers and Poles

CONFIDENTIAL

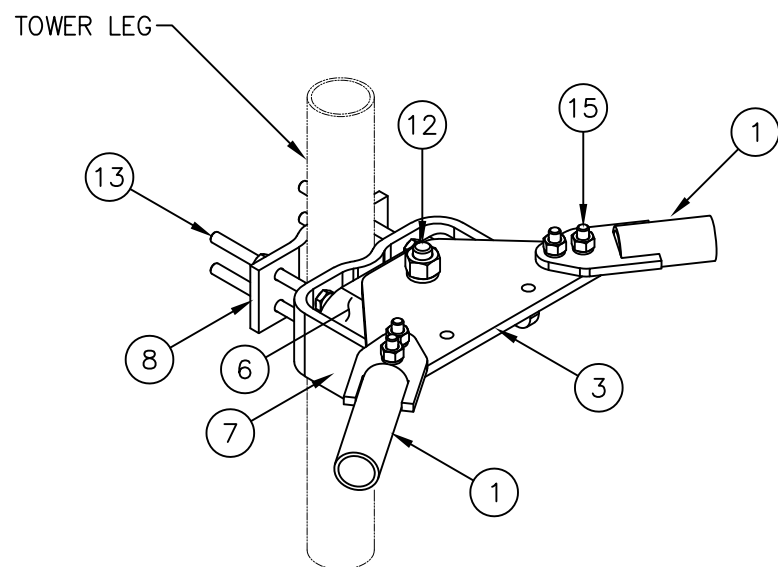
This document and the information contained herein is the confidential trade secret property of Sabre Communications Corporation ("Sabre") and must not be reproduced, copied or used, in whole or in part, for any purpose without the prior written consent of Sabre.

© 2016 Sabre Communications Corporation. All rights reserved.

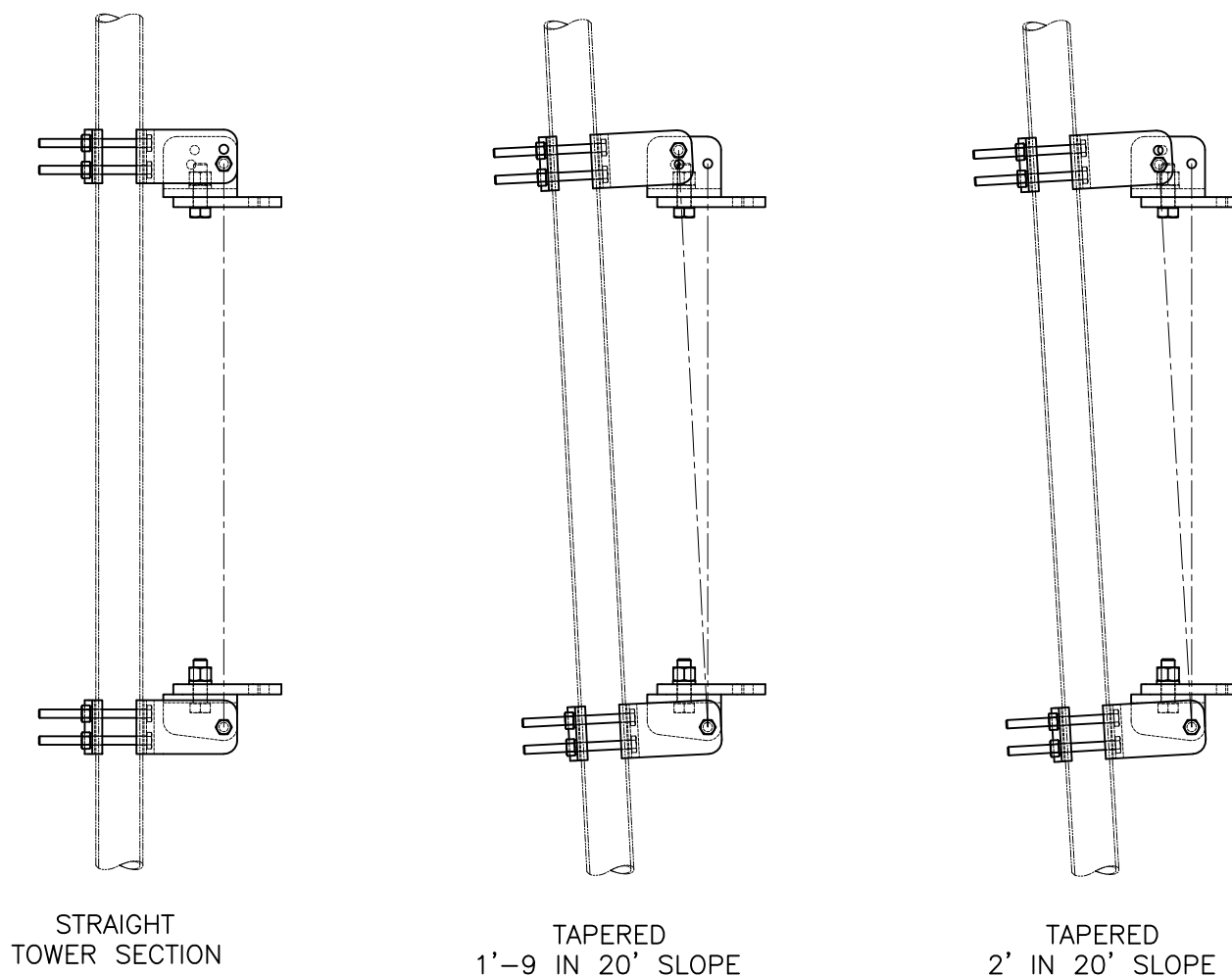
12' EHD V-BOOM ASSEMBLY W/TIEBACKS (3' STANDOFF) W/NO ANTENNA MOUNTING PIPES					
DATE		02/29/16	SIZE	B	REV
DRAWN BY		WRF	DRAWING NO.		2
CHECKED BY		KLE	C10857007C		
			SCALE	None	PAGE
			2 OF 4		



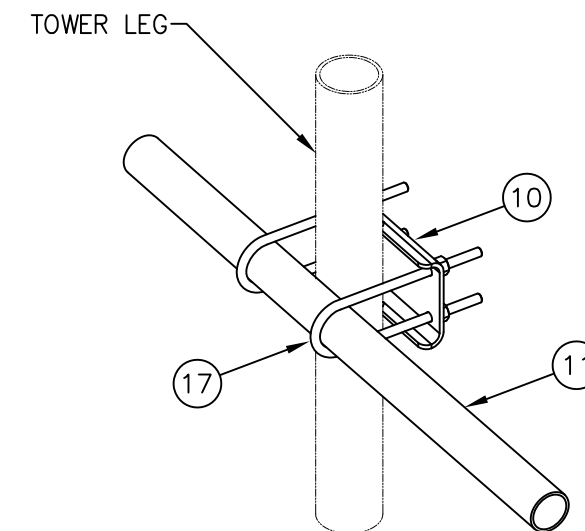
UPPER LEG MOUNTING DETAIL



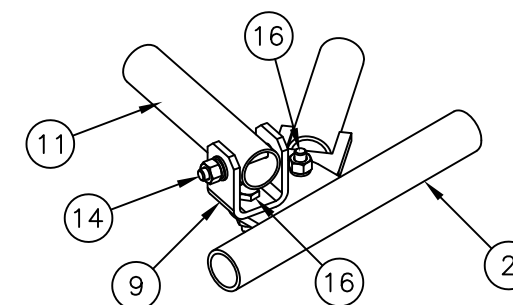
LOWER LEG MOUNTING DETAIL




-----PIVOTING OPTIONS-----



TIE BACK DETAIL
AT TOWER LEG

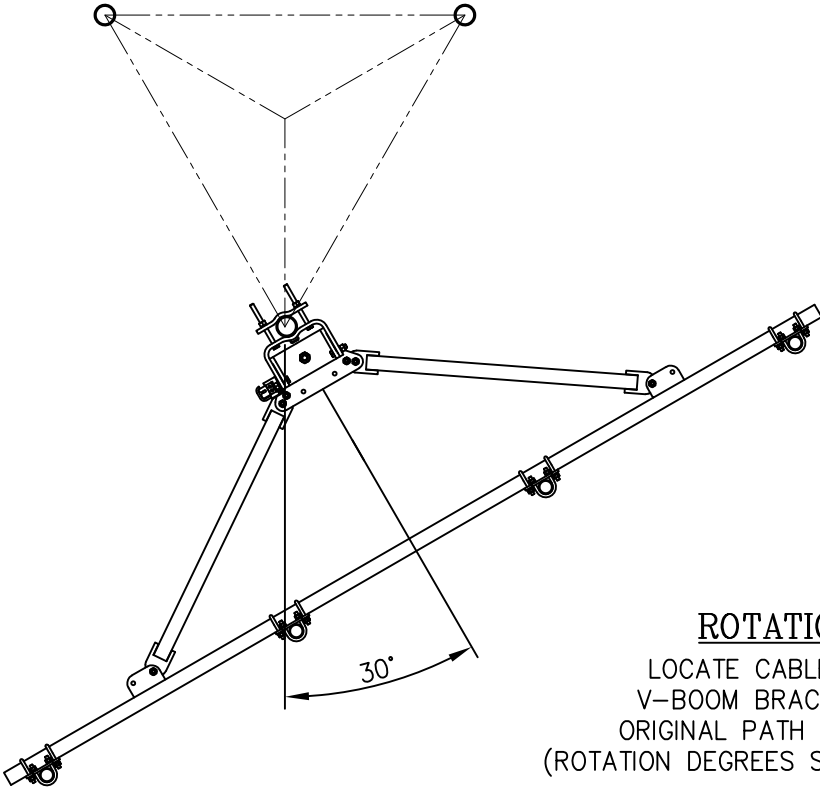


TIE BACK DETAIL
AT ANTENNA MOUNTING FRAME

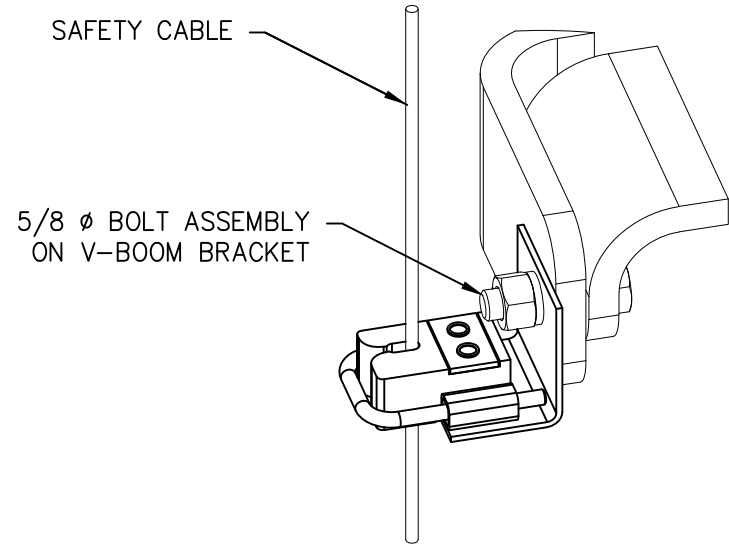
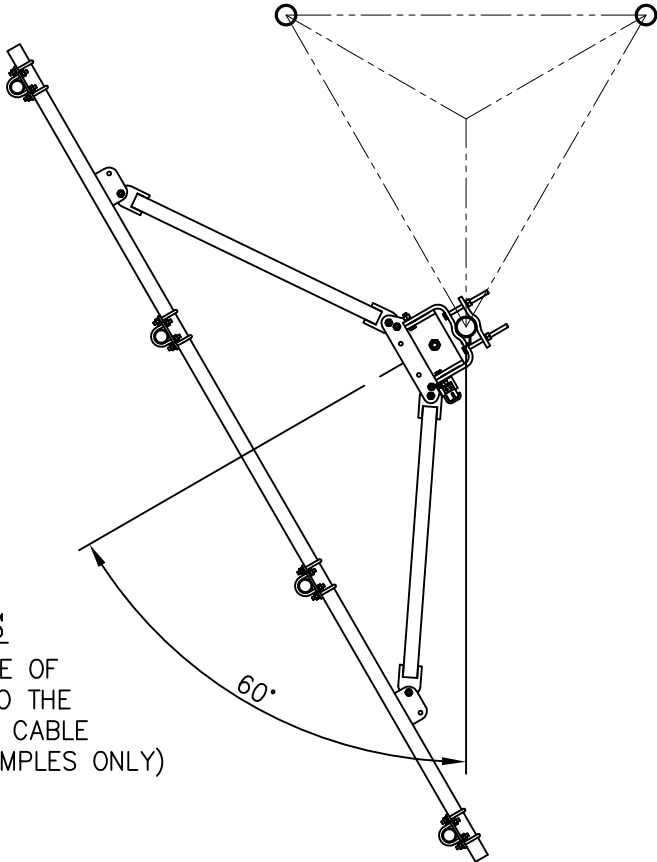
UNLESS OTHERWISE SPECIFIED ALL DIMENSIONS INCLUDE FINISHES AND ARE IN INCHES				MATERIAL:			12' EHD V-BOOM ASSEMBLY W/TIEBACKS (3' STANDOFF) W/NO ANTENNA MOUNTING PIPES					
TOLERANCES: FRACTIONS ± 1/16" ANGLES ± 1/2 DEG. DECIMALS ± .010"				TOLERANCES DO NOT APPLY TO RAW MATERIAL								
						<p>CONFIDENTIAL</p> <p>This document and the information contained herein is the confidential trade secret property of Sabre Communications Corporation ("Sabre") and must not be reproduced, copied or used, in whole or in part, for any purpose without the prior written consent of Sabre.</p> <p>© 2016 Sabre Communications Corporation. All rights reserved.</p>			SIZE	DRAWING NO.		REV
							DATE	02/29/16	B	C10857007C		2
							DRAWN BY	WRF				
							CHECKED BY	KLE		SCALE	PAGE	
										None	3 OF 4	
2	04/28/20	KLE	EK	ADDED NOTE 5 TO GENERAL NOTES.								
				ADDED NOTE 4 TO INSTALLATION NOTES AND ADDED PAGE 4								
1	10/19/16	KLE	DEL	ADDED INSTALLATION NOTES								
REV	DATE	DRW	CHK	DESCRIPTION								

OPTIONAL LOCKING CABLE GUIDE

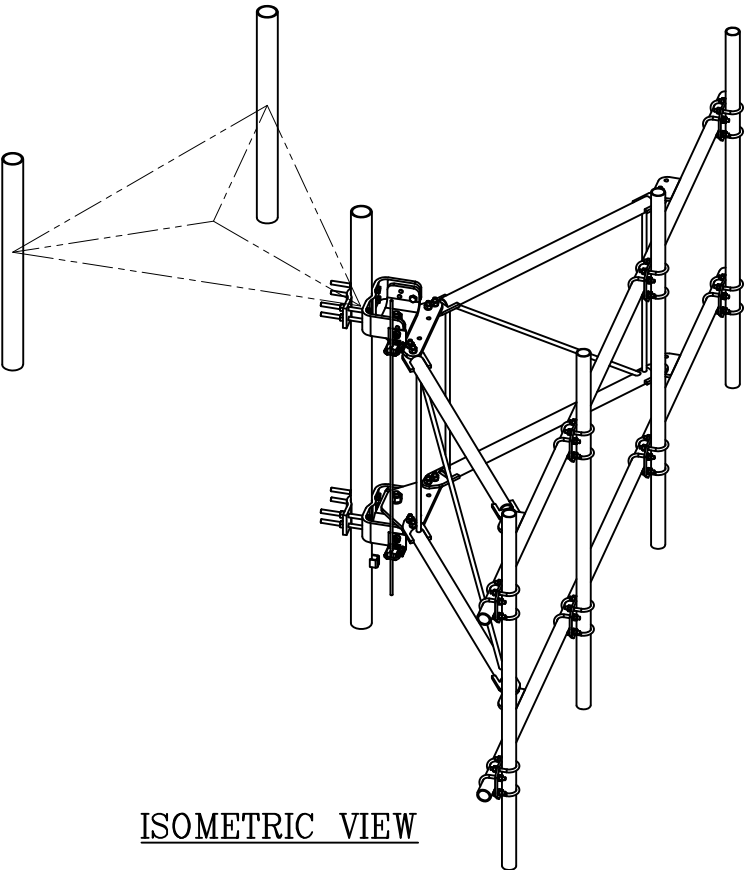
IF REQUIRED PLEASE ORDER PART NUMBER C30017022. THIS KIT WILL COME WITH (2) LOCKING CABLE GUIDES FOR TOP & BOTTOM V-BOOM BRACKETS.



ROTATION OPTIONS
LOCATE CABLE GUIDE ON SIDE OF V-BOOM BRACKET CLOSEST TO THE ORIGINAL PATH OF THE SAFETY CABLE
(ROTATION DEGREES SHOWN ARE EXAMPLES ONLY)




CABLE GUIDE DETAIL



ISOMETRIC VIEW

NOTE

OTHER ADDITIONAL CABLE GUIDE SUPPORTS MAY BE REQUIRED ABOVE AND BELOW V-BOOM SO THAT CABLE ALIGNMENT IS WITHIN REQUIRED LIMITS.

UNLESS OTHERWISE SPECIFIED ALL DIMENSIONS INCLUDE FINISHES AND ARE IN INCHES				MATERIAL:			12' EHD V-BOOM ASSEMBLY W/TIEBACKS (3' STANDOFF) W/NO ANTENNA MOUNTING PIPES			
TOLERANCES: FRACTIONS ± 1/16" ANGLES ± 1/2 DEG. DECIMALS ± .010"				TOLERANCES DO NOT APPLY TO RAW MATERIAL						
						<p>CONFIDENTIAL</p> <p>This document and the information contained herein is the confidential trade secret property of Sabre Communications Corporation ("Sabre") and must not be reproduced, copied or used, in whole or in part, for any purpose without the prior written consent of Sabre.</p> <p>© 2016 Sabre Communications Corporation. All rights reserved.</p>				
2	04/28/20	KLE	EK	ADDED NOTE 5 TO GENERAL NOTES.						
				ADDED NOTE 4 TO INSTALLATION NOTES AND ADDED PAGE 4						
1	10/19/16	KLE	DEL	ADDED INSTALLATION NOTES						
REV	DATE	DRW	CHK	DESCRIPTION						
								</		