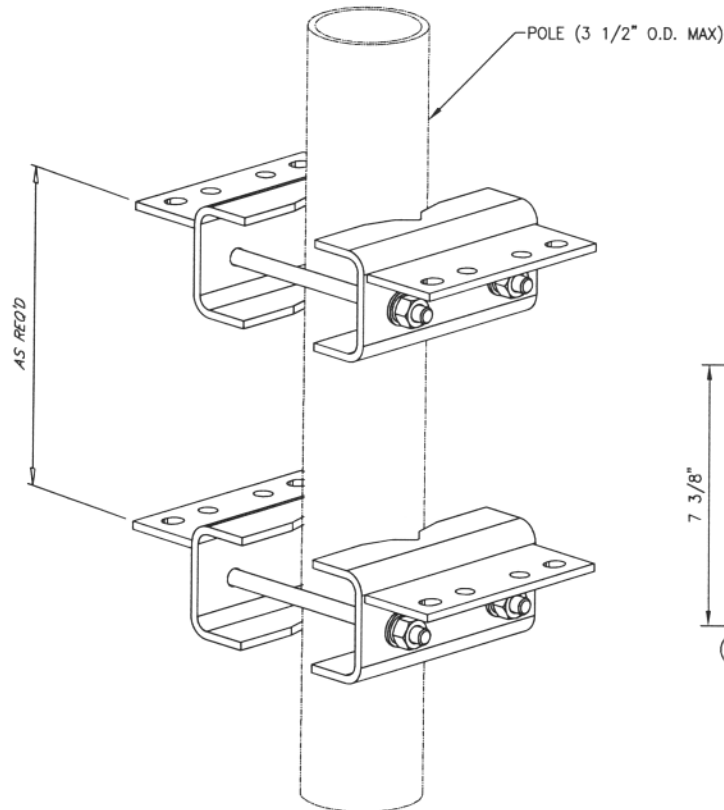


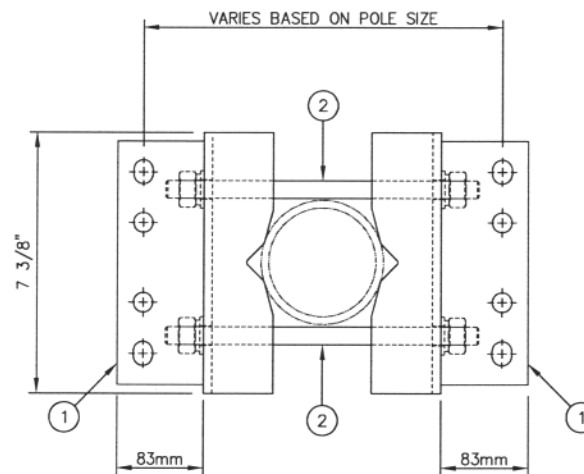


C10123109R MINI RRU PIPE MOUNT

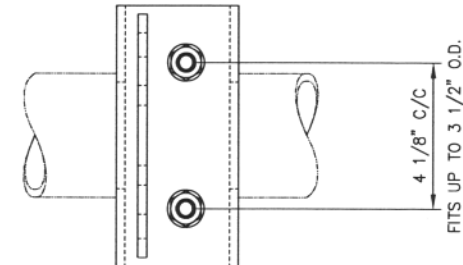
ITEM	QTY.	DESCRIPTION	
1.	4	ZW02463	WELDMENT, RRU MOUNT
2.	4	C40032027	THREADED ROD ASSEMBLY, 1/2" Ø X 0'-9"
TOTAL WEIGHT			24



ISOMETRIC VIEW



TOP VIEW



Distributed By
Rosenberger
Rosenberger Site Solutions, LLC
visit www.RosenbergerOnline.us

NOTES

1. THIS MOUNT IS STRUCTURALLY ADEQUATE TO SUPPORT (2) 2' X 1' RADIOS (100 LBS. EACH) AT AN ELEVATION OF 200' ABOVE GRADE, WITH STRUCTURE CLASS II, EXPOSURE CATEGORY C, TOPOGRAPHIC CATEGORY 1, AND A BASIC WIND SPEED OF 160 MPH WITH NO ICE AND 155 MPH WITH 1" RADIAL ICE PER ANSI/TIA-222-G.
2. TIGHTENING OF BOLTS: ALL HIGH STRENGTH BOLTS SHALL BE TIGHTENED TO A SNUG-TIGHT CONDITION, AS DEFINED BY AISC.

UNLESS OTHERWISE SPECIFIED
ALL DIMENSIONS INCLUDE
FINISHES AND ARE IN INCHES
TOLERANCES: FRACTIONS ± 1/16"
ANGLES ± 1/2 DEG.
DECIMALS ± .010"

MATERIAL:
TOLERANCES DO NOT APPLY
TO RAW MATERIAL

MANUFACTURED BY

Sabre Industries
Towers and Poles

CONFIDENTIAL

This document and the information contained herein is the confidential trade secret property of Sabre Communications Corporation ("Sabre") and must not be reproduced, copied or used, in whole or in part, for any purpose without the prior written consent of Sabre.
© 2016 Sabre Communications Corporation. All rights reserved.

MINI RRU PIPE MOUNT
ROSENBERGER SITE SOLUTIONS
FITS 2 3/8" THROUGH 3 1/2" DIAMETER

REV	DATE	DRW/CHK	DESCRIPTION
-----	------	---------	-------------

		SIZE	DRAWING NO.		REV
DATE	01/26/16	B	C10123109R		0
DRAWN BY	WRF		SCALE	PAGE	
CHECKED BY	KLE		None	1 OF 1	