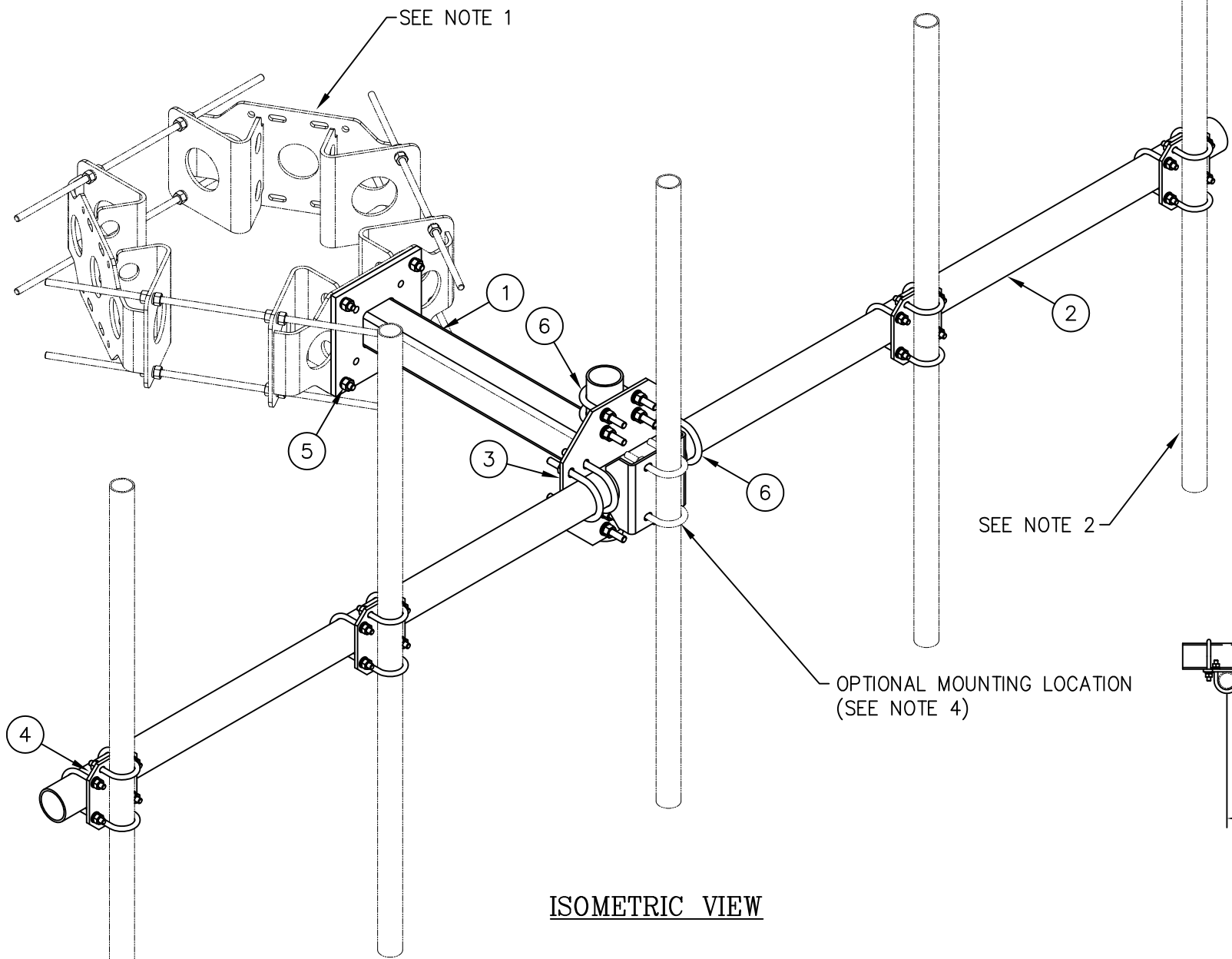


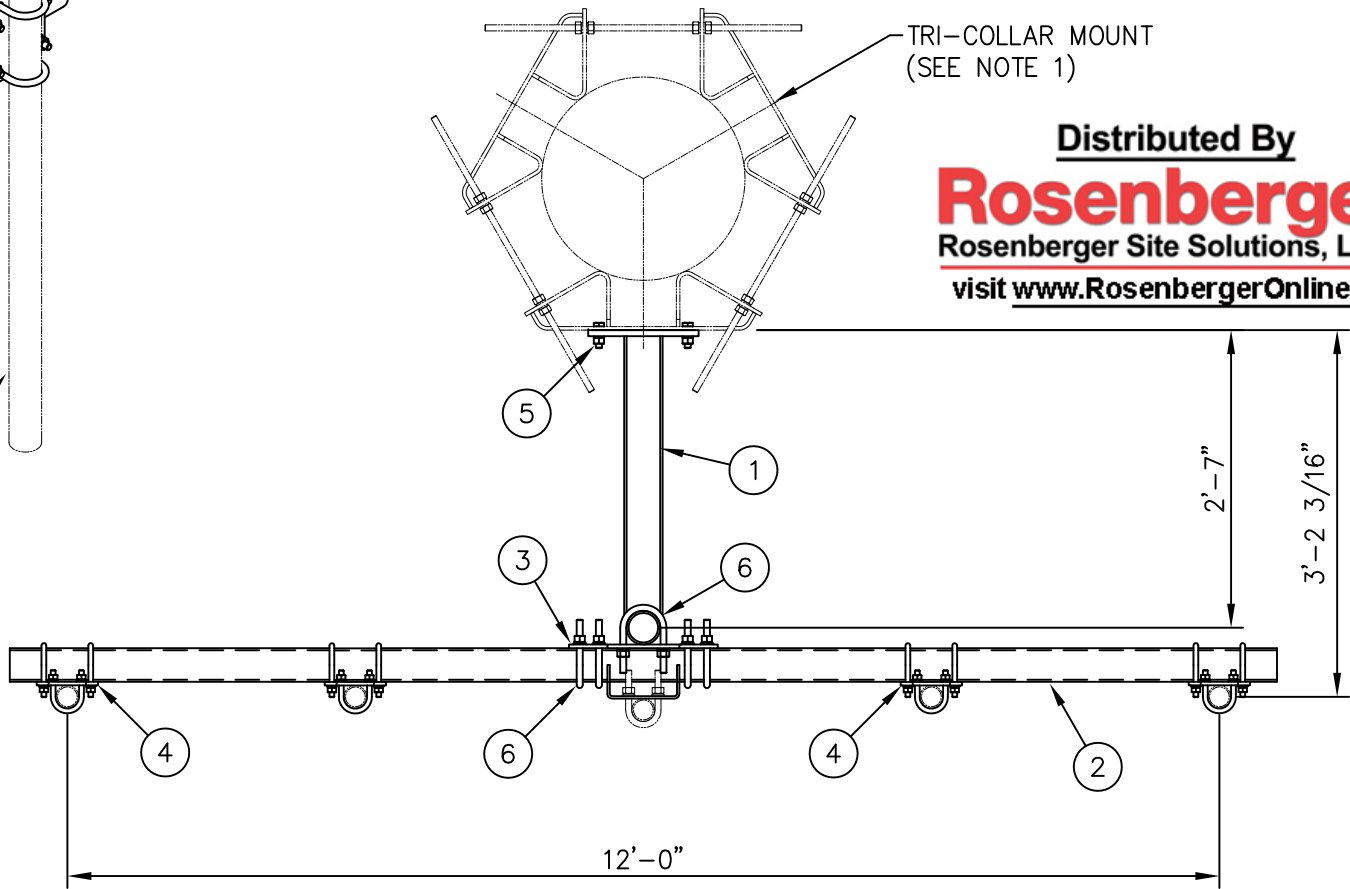


- \* EACH C10902013 CROSSOVER PLATE KIT CONSISTS OF . . .
- (1) CS03123 CROSSOVER PLATE
  - (2) C40034139 U-BOLT ASSEMBLY, 1/2  $\phi$  X 2 15/16 C-C
  - (2) C40034143 U-BOLT ASSEMBLY, 1/2  $\phi$  X 4 1/16 C-C



ISOMETRIC VIEW


C10166301 T-ARM ASSEMBLY				
ITEM	QTY.	PART NO.	DESCRIPTION	WEIGHT
1.	1	CW00144	T-ARM WELDMENT	65
2.	1	CW00016	SUPPORT PIPE WELDMENT	109
3.	1	CS00038	T-ARM CROSSOVER PLATE	22
* 4.	4	C10902013	PIPE CROSSOVER PLATE KIT	36
5.	4	C40026025	BOLT ASSEMBLY 5/8 $\phi$ X 2 1/2 A325	2
6.	8	C40034028	U-BOLT ASSEMBLY 5/8 $\phi$ X 4 3/16 C-C	15
TOTAL WEIGHT				249



PLAN VIEW

Distributed By  
**Rosenberger**  
Rosenberger Site Solutions, LLC  
visit [www.RosenbergerOnline.us](http://www.RosenbergerOnline.us)

- NOTES:
- 1. TRI-COLLAR MOUNT IS SHOWN TYPICAL AND MUST BE PURCHASED SEPARATELY.
  - 2. 2 3/8" O.D. MOUNTING PIPES MUST BE PURCHASED SEPARATELY.
  - 3. QUANTITIES SHOWN IN LIST OF MATERIAL ARE FOR ONE (1) T-ARM ASSEMBLY ONLY.
  - 4. OPTIONAL MOUNTING LOCATION  
(2) C40034023 U-BOLTS 5/8  $\phi$  X 3 1/16" C/C AND (1) 2 3/8 O.D. MOUNTING PIPE MUST BE PURCHASED SEPARATELY.

UNLESS OTHERWISE SPECIFIED ALL DIMENSIONS INCLUDE FINISHES AND ARE IN INCHES				MATERIAL:			T-ARM ASSEMBLY 3'-0 ARM WITH 12'-0 FACE. NO ANTENNA MOUNTING PIPES					
TOLERANCES: FRACTIONS ± 1/16" ANGLES ± 1/2 DEG. DECIMALS ± .010"				TOLERANCES DO NOT APPLY TO RAW MATERIAL								
						<div>CONFIDENTIAL</div> <div>This document and the information contained herein is the confidential trade secret property of Sabre Communications Corporation ("Sabre") and must not be reproduced, copied or used, in whole or in part, for any purpose without the prior written consent of Sabre.</div> <div>© 2014 Sabre Communications Corporation. All rights reserved.</div>						
REV	DATE	DRW	CHK	DESCRIPTION								
DATE 11/20/14												
DRAWN BY WRF												
CHECKED BY KLE												
SIZE B												
DRAWING NO. C10166301												
REV 0												
SCALE None												
PAGE 1 OF 1												