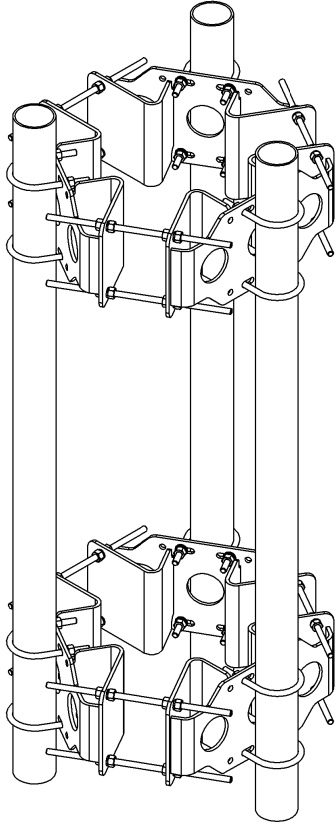
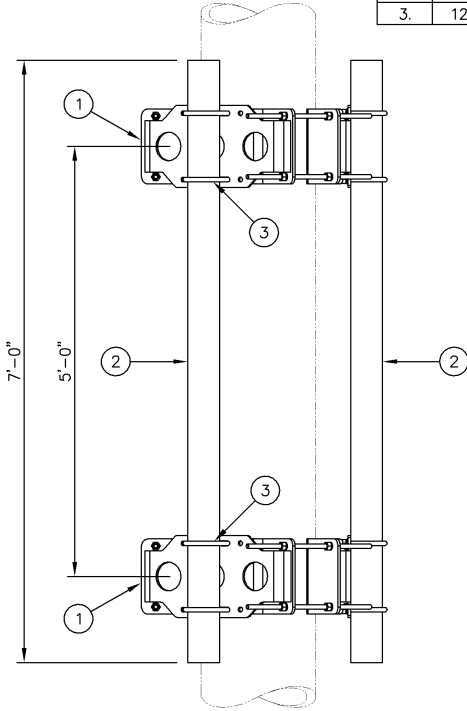


NOTE:  
SEE DRAWING C10112377 FOR INSTALLATION OF TRI-COLLAR BRACKET ASSEMBLY

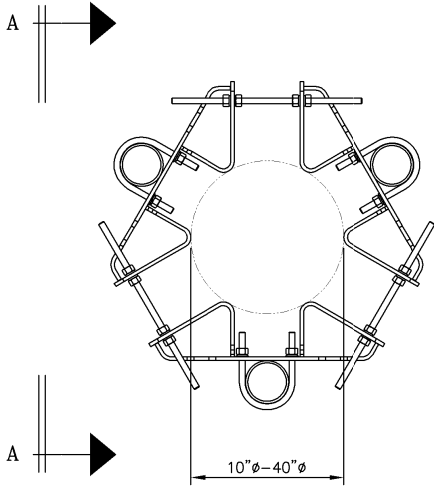


Distributed By  
**Rosenberger**  
Rosenberger Site Solutions, LLC  
visit [www.RosenbergerOnline.us](http://www.RosenbergerOnline.us)

ISOMETRIC VIEW



VIEW A-A



PLAN VIEW

C10899050 4 1/2" O.D. PIPE MOUNT ASSEMBLY				
ITEM	QTY.	PART NO.	DESCRIPTION	WEIGHT
1.	2	C10112377	TRI-COLLAR BRACKET ASSEMBLY	416
2.	3	C10901407	PIPE, 4 1/2 O.D. X .237 X 7'-0	236
3.	12	C40034032	U-BOLT ASSEMBLY, 5/8 Ø X 5 3/16 C-C	26
TOTAL WEIGHT				678

UNLESS OTHERWISE SPECIFIED ALL DIMENSIONS INCLUDE FINISHES AND ARE IN INCHES		MATERIAL:	
TOLERANCES: FRACTIONS ± 1/16" ANGLES ± 1/2 DEG. DECIMALS ± .010"		TOLERANCES DO NOT APPLY TO RAW MATERIAL	
REV	DATE	DRW	CHK
1	02/03/17	WRF	KLE
COLLAR WAS C10112300			
DESCRIPTION			

**Sabre Industries™**  
Towers and Poles

CONFIDENTIAL  
This document and the information  
contained herein is the confidential trade  
secret property of Sabre Communications  
Corporation ("Sabre") and must not be  
reproduced, copied or used, in whole or in  
part, for any purpose without the prior  
written consent of Sabre.  
© 2016 Sabre Communications Corporation.  
All rights reserved.

4 1/2" O.D. PIPE MOUNT ASSEMBLY FOR MONOPOLES (FITS 10" TO 40" DIAMETER)				
DATE		SIZE	DRAWING NO.	REV
01/26/16		B	C10899050	1
DRAWN BY		WRF	SCALE	
CHECKED BY		DLW	None	
			PAGE	
			1 OF 1	