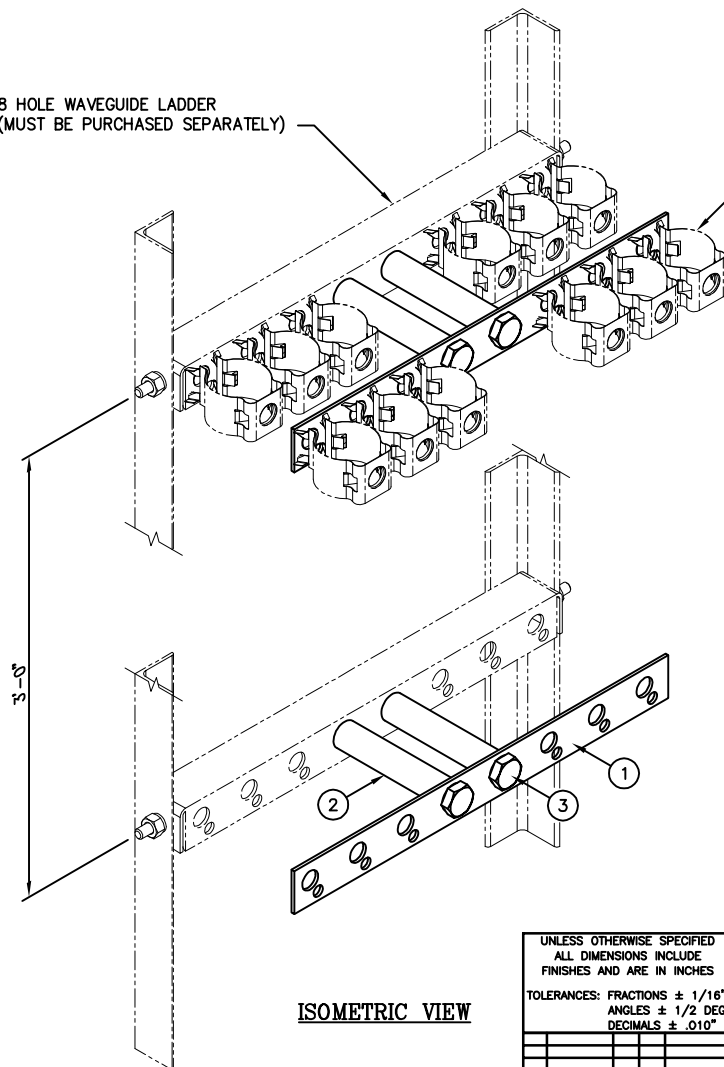


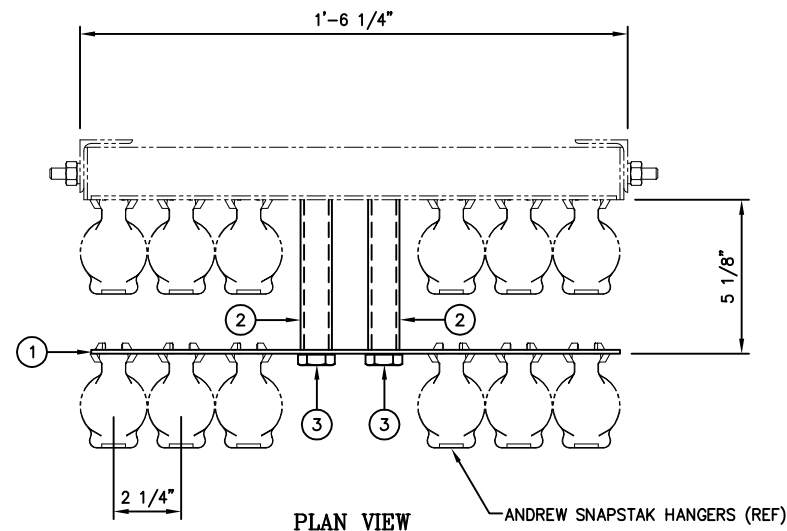
8 HOLE WAVEGUIDE LADDER  
(MUST BE PURCHASED SEPARATELY)



STANDOFF CAN SUPPORT AN  
ADDITIONAL SIX LINES PER LADDER

# C20129009 6 ON 6 STACKER KIT (4 RUNGS)

ITEM	QTY.	PART NO.	DESCRIPTION	WEIGHT
1.	4	CS00152	8 HOLE WAVEGUIDE LADDER STACKER PLATE	5
2.	8	CS00154	PIPE, SPACER 3/4" Ø NOM. (SCH. 40) X 0'-5"	4
3.	8	C40026038	BOLT ASSEMBLY, 5/8" Ø X 6 1/2" A325	9
TOTAL WEIGHT				18



## FIELD NOTE:

THIS WAVEGUIDE STANDOFF ASSEMBLY IS NOT TO BE USED AS A CLIMBING APPARATUS.

UNLESS OTHERWISE SPECIFIED ALL DIMENSIONS INCLUDE FINISHES AND ARE IN INCHES		MATERIAL:	
TOLERANCES: FRACTIONS ± 1/16" ANGLES ± 1/2 DEG. DECIMALS ± .010"		TOLERANCES DO NOT APPLY TO RAW MATERIAL	
REV	DATE	DRW/CHK	DESCRIPTION
1	08/26/08	WRF/HMN	ADDED ISOMETRIC VIEW



**CONFIDENTIAL**  
This document and the information  
contained herein is the confidential trade  
secret property of Sabre Communications  
Corporation ("Sabre") and must not be  
reproduced, copied or used, in whole or in  
part, for any purpose without the prior  
written consent of Sabre.  
© 2006 Sabre Communications Corporation.  
All rights reserved.

6 ON 6  
10 FT. WAVEGUIDE LADDER  
STACKER KIT (4 RUNGS)  
(FOR 8 HOLE RUNG - 7/16" Ø & 3/4" Ø)

DATE		08/20/03	SIZE	B	DRAWING NO.	C20129009	REV	1
DRAWN BY		KLE	SCALE		None		PAGE	
CHECKED BY		DLW					1 OF 1	