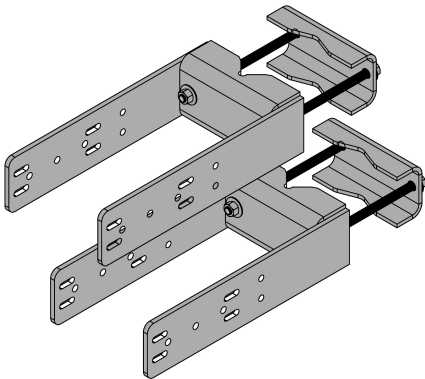


UNIVERSAL LOW-PIM RRU MOUNT

D210RRU



Dimensions

Height	120.65 mm   4-3/4 in
Length	444.50 mm   17-1/2 in
Width	190.50 mm   7-1/2 in
Weight	16.50 kg   36.37 lb

General Specifications

Hole Size	(4) 13/32 in x 1 3/16 , (2)Ø 0.41 in and (3) Ø 0.44
Hole, quantity	18
Includes	Brackets
Material Type	Steel
Finish	Hot Dip Galvanized

Mounting

Mounting Type	Angle Member   Round Member
Mounting Range	60 Deg Angle Legs: 1 in to 5 in 90 Deg Angle Legs: 1 in to 3 1/2 in Fits Round Legs: 1-1/2 in to 5 in OD
Torque	25 ft-lbs

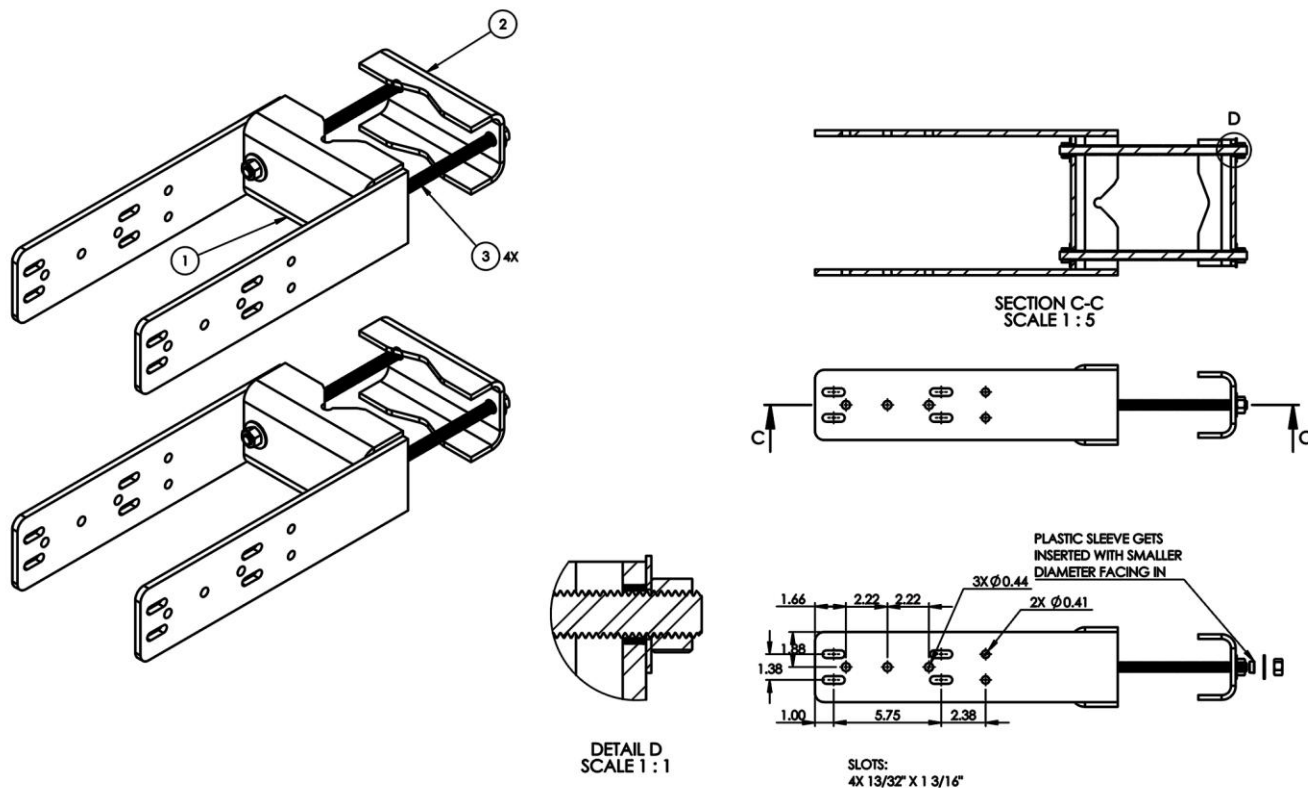
Packaging

Package Quantity	1 Kit
------------------	-------

**NOTE**  
*Installation of this product should only be performed by trained, qualified and experienced personnel. Installation instructions for this product should be read thoroughly before installation is performed. The manufacturer and supplier of this product disclaims any liability or responsibility for the results of improper or unsafe installation practice.*

When installed properly, this product meets the requirements for installation in High Risk PIM Zones. Static and dynamic testing was conducted per IEC 46/666 "Passive RF and Microwave Devices, Intermodulation Level Measurement", "Part 8: Measurement of passive intermodulation generated by objects exposed to RF radiation" and IEC 62037-1.

## Outline Drawing



ITEM	Description	QTY
1	RRU MOUNT WELDMENT, LOW PIM	2
2	RRU MOUNT CLAMP (FORMED)	2
3	THREADED ROD ASSEMBLY 1/2" X 0'-10" (A36)	4