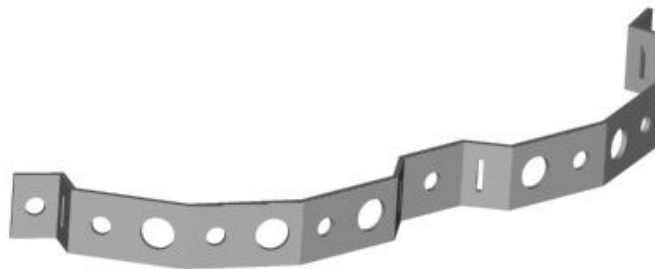


Product Description

The Snap-In Adapter Bracket is used in conjunction with banding and is used on large round members, water towers, or outside of a monopole. You can use multiple brackets for the number of runs required for your system. The galvanized steel bracket supports both Standard Hangers and Snap-In Hangers.



Part Number	Description	Quantity
D19110	Universal Round Member Support Bracket for Six Lines of Coax	10
D19115	Universal Round Member Support Bracket for Nine Lines of Coax	10

*NOTE: Hanger hardware kit not included, order separately.

Notice

Installation of this product should only be performed by trained, qualified and experienced personnel. Installation instructions for this product should be read thoroughly before installation is performed. The manufacturer and supplier of this product disclaims any liability or responsibility for the results of improper or unsafe installation practice