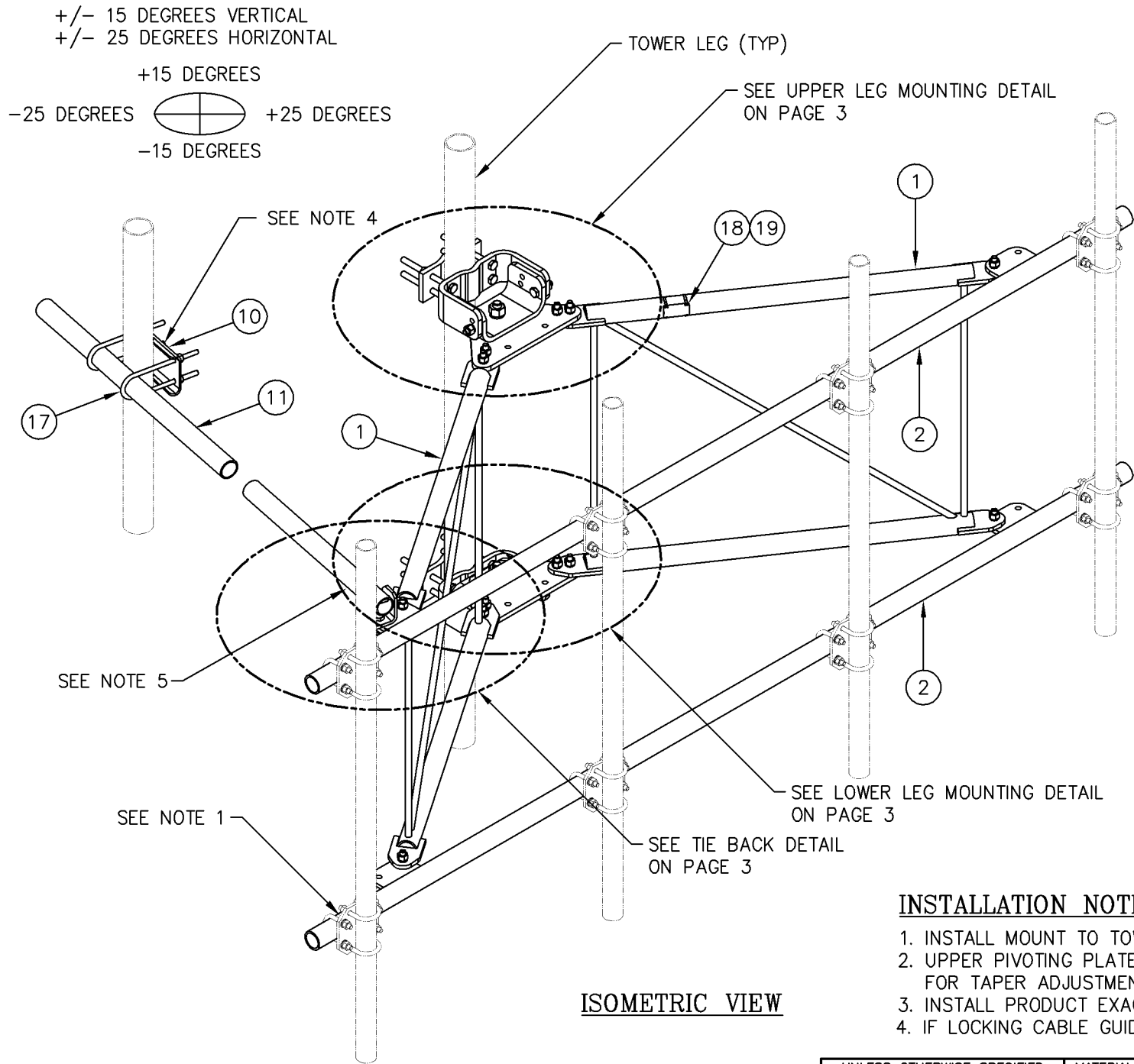


TIEBACK ANGLE RANGE DETAIL



NOTES:

1. MOUNTING PIPES & CROSSOVER PLATE KITS MUST BE PURCHASED SEPARATELY.
2. QUANTITIES SHOWN IN LISTS OF MATERIAL ARE FOR ONE (1) V-BOOM ONLY.
3. THIS V-BOOM WILL MOUNT TO THE FOLLOWING: 1 1/2"Ø TO 5 9/16"Ø ROUND LEG.
4. TIEBACK MUST BE CONNECTED TO A RIGID MEMBER THAT PROVIDES ADEQUATE SUPPORT WITHIN THE LIMITS NOTED ABOVE IN THE TIEBACK ANGLE RANGE DETAIL UNLESS APPROVED BY THE ENGINEER OF RECORD.
5. THE TIEBACK IS SHOWN IN THIS POSITION AS A DEFAULT. THIS TIEBACK CAN BE CONNECTED AT ANY (1) OF THE (4) POSITIONS ON THE TABS ON THE FACE PIPE.

INSTALLATION NOTES:

1. INSTALL MOUNT TO TOWER AS SHOWN, SO THAT WELDED STANDOFF DIAGONAL IS SLOPING DOWNWARD FROM TOWER END TO FACE PIPE END.
2. UPPER PIVOTING PLATE (ITEM 4) HAS THREE HOLES ON EACH SIDE AND UPPER LEG CLAMP PLATE (ITEM 5) HAS TWO HOLES ON EACH SIDE FOR TAPER ADJUSTMENT.
3. INSTALL PRODUCT EXACTLY AS SHOWN IN DRAWING, WITH ALL BOLTS FACING UPWARDS.
4. IF LOCKING CABLE GUIDES ARE REQUIRED THEY MUST BE PURCHASED SEPARATELY (SEE PAGE 4).


C10857002C 10' HD V-BOOM ASSEMBLY W/TIEBACK

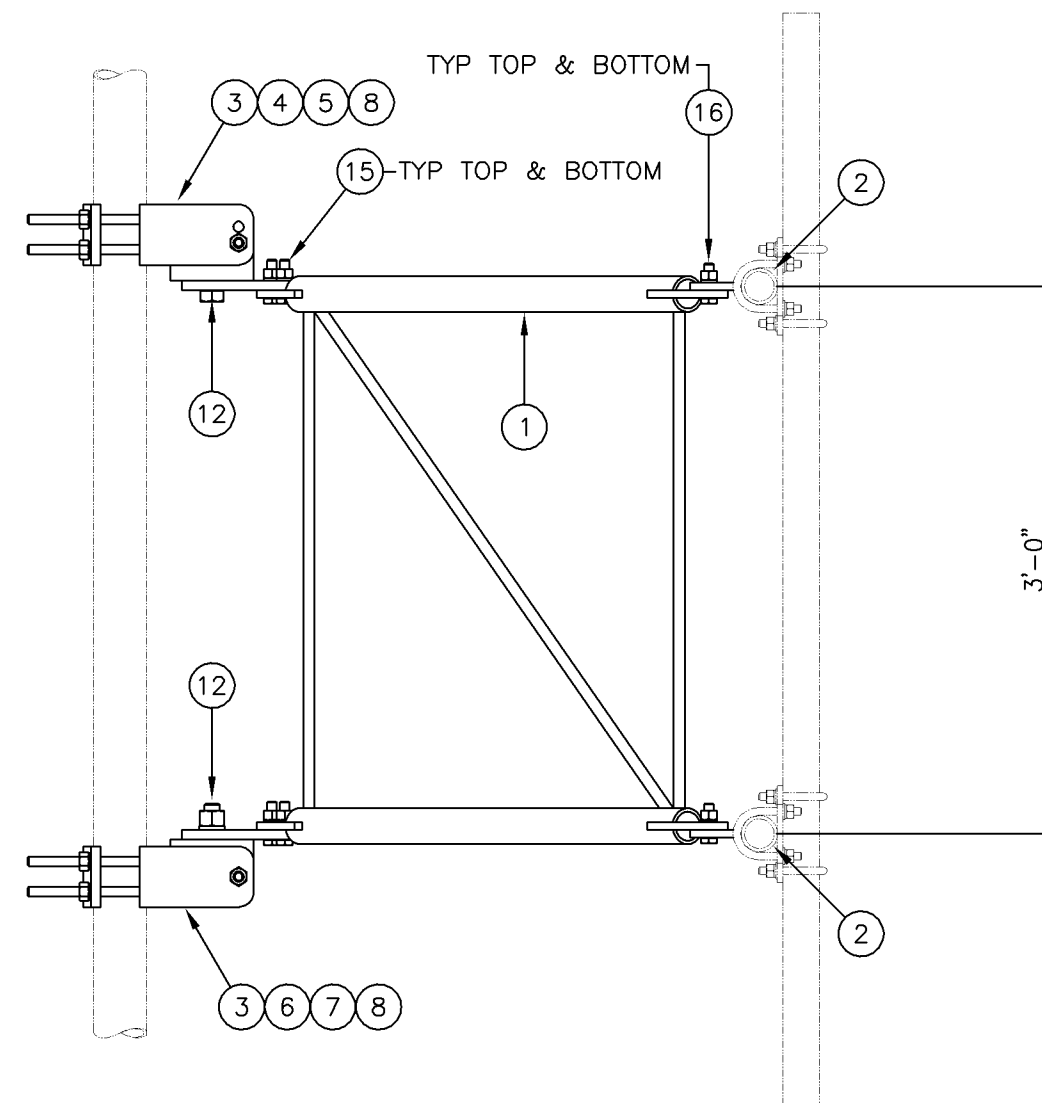
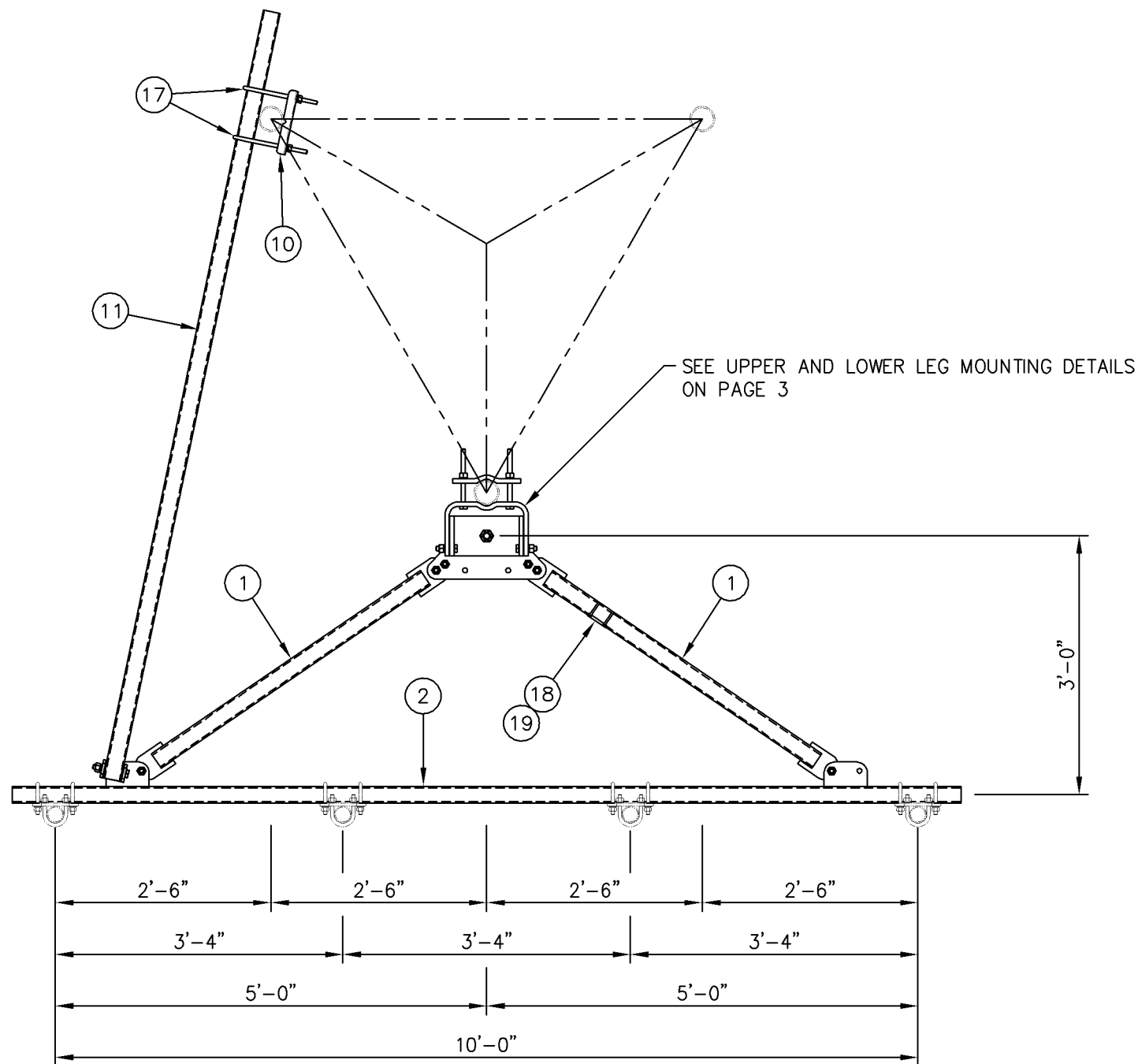
ITEM	QTY.	PART NO.	DESCRIPTION	WEIGHT
1.	2	CW01222	WELDMENT, STANDOFF ARM	126
2.	2	CW01224	WELDMENT, FACE PIPE	126
3.	2	CS03109	PLATE, ROTATING	34
4.	1	CS03110	PLATE, PIVOTING (UPPER)	16
5.	1	CS03111	PLATE, LEG CLAMP (UPPER)	17
6.	1	CS03112	PLATE, PIVOTING (LOWER)	14
7.	1	CS03113	PLATE, LEG CLAMP (LOWER)	17
8.	2	CS03114	PLATE, LEG CLAMP (BACK)	14
9.	1	CS00098	PLATE, TIE BACK SWIVEL	3
10.	1	CS03285	PLATE, TIE BACK CLAMP	4
11.	1	CS03333	PIPE, TIE BACK	38
12.	2	C40026073	BOLT ASSEMBLY, 1 Ø X 3 A325	4
13.	8	C40140004	BOLT ASSEMBLY, 5/8 Ø X 8 A307	13
14.	1	C40026033	BOLT ASSEMBLY, 5/8 Ø X 4 1/2 A325	1
15.	12	C40026025	BOLT ASSEMBLY, 5/8 Ø X 2 1/2 A325	6
16.	5	C40026024	BOLT ASSEMBLY, 5/8 Ø X 2 1/4 A325	3
17.	2	C40034183	U-BOLT ASSEMBLY, 1/2 Ø X 2 9/16 C-C	3
18.	1	Z30992002	MOUNT CLASSIFICATION TAG C10857002C	1
19.	2	C40062103	STAINLESS STEEL SELF-LOCKING CABLE TIE	1
TOTAL WEIGHT				441

PACKAGING NOTE

CK00386 INCLUDES ITEMS 1, 3, 4, 5, 6, 7, 12 & 15 (8 QTY)  
CK00388 INCLUDES ITEMS 2, 8, 9, 10, 11, 13, 14, 15 (4 QTY), 16, 17, 18 & 19

Distributed By  
**Rosenberger**  
Rosenberger Site Solutions, LLC  
visit [www.RosenbergerOnline.us](http://www.RosenbergerOnline.us)

UNLESS OTHERWISE SPECIFIED ALL DIMENSIONS INCLUDE FINISHES AND ARE IN INCHES				MATERIAL:		 Towers and Poles		10' HD V-BOOM ASSEMBLY W/TIEBACK (3' STANDOFF) W/NO ANTENNA MOUNTING PIPES									
TOLERANCES: FRACTIONS ± 1/16" ANGLES ± 1/2 DEG. DECIMALS ± .010"				TOLERANCES DO NOT APPLY TO RAW MATERIAL													
						<b>CONFIDENTIAL</b> This document and the information contained herein is the confidential trade secret property of Sabre Communications Corporation ("Sabre") and must not be reproduced, copied or used, in whole or in part, for any purpose without the prior written consent of Sabre. © 2015 Sabre Communications Corporation. All rights reserved.				SIZE		DRAWING NO.		REV			
								DATE		12/22/15		B		C10857002C		4	
								DRAWN BY		WRF				SCALE		PAGE	
								CHECKED BY		EK				None		1 OF 4	
REV		DATE		DRW/CHK				DESCRIPTION									
4		04/28/20		KLE/EK		ADDED NOTE 5 TO GENERAL NOTES.											
3		10/19/16		KLE/DEL		ADDED NOTE 4 TO INSTALLATION NOTES AND ADDED PAGE 4											
2		02/05/16		DLW/DEL		ADDED INSTALLATION NOTES											
1		01/21/16		KLE/EK		ADDED PACKAGING NOTE											
						REVISED NOTES & ADDED TIEBACK ANGLE RANGE DETAIL											



SIDE VIEW

Distributed By  
**Rosenberger**  
 Rosenberger Site Solutions, LLC  
 visit [www.RosenbergerOnline.us](http://www.RosenbergerOnline.us)

**MOUNTING OPTIONS**  
 SHOWING MOUNTING PIPE PLACEMENTS

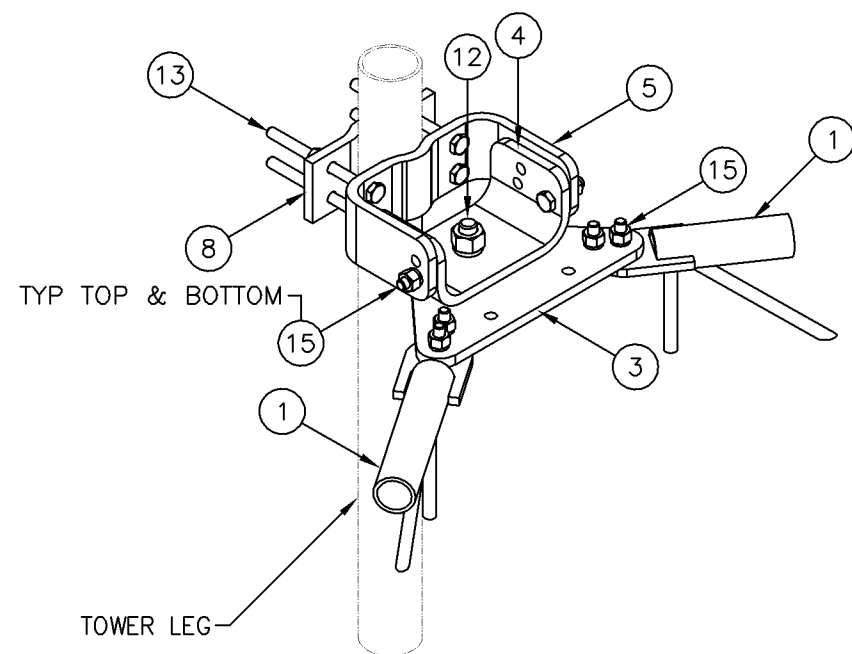
UNLESS OTHERWISE SPECIFIED ALL DIMENSIONS INCLUDE FINISHES AND ARE IN INCHES				MATERIAL:			
TOLERANCES: FRACTIONS $\pm 1/16"$ ANGLES $\pm 1/2$ DEG. DECIMALS $\pm .010"$				TOLERANCES DO NOT APPLY TO RAW MATERIAL			
REV	DATE	DRW	CHK	DESCRIPTION			
4	04/28/20	KLE	EK	ADDED NOTE 5 TO GENERAL NOTES.			
3	10/19/16	KLE	DEL	ADDED NOTE 4 TO INSTALLATION NOTES AND ADDED PAGE 4			
2	02/05/16	DLW	DEL	ADDED PACKAGING NOTE			
1	01/21/16	KLE	EK	REVISED NOTES & ADDED TIEBACK ANGLE RANGE DETAIL			

**Sabre Industries™**  
 Towers and Poles

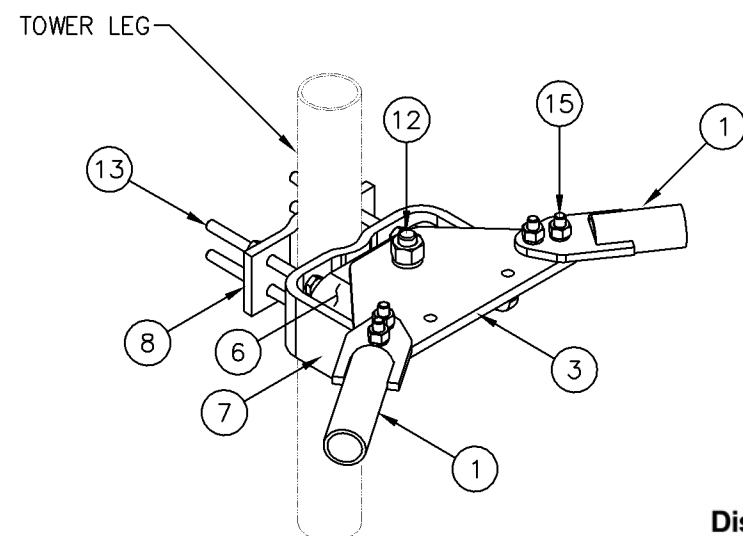
**CONFIDENTIAL**  
 This document and the information  
 contained herein is the confidential trade  
 secret property of Sabre Communications  
 Corporation ("Sabre") and must not be  
 reproduced, copied or used, in whole or in  
 part, for any purpose without the prior  
 written consent of Sabre.  
 © 2015 Sabre Communications Corporation.  
 All rights reserved.

10' HD V-BOOM ASSEMBLY W/TIEBACK  
 (3' STANDOFF)  
 W/NO ANTENNA MOUNTING PIPES

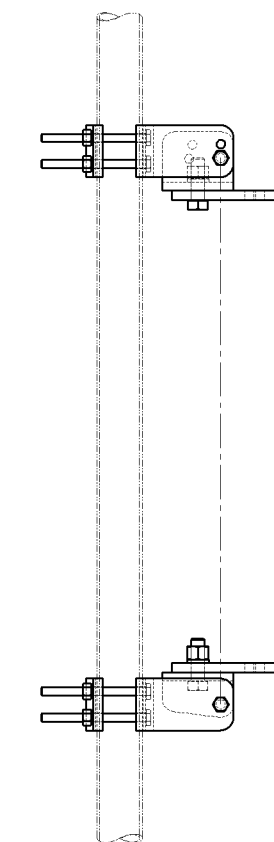
		SIZE B	DRAWING NO. C10857002C		REV 4
DATE	12/22/15				
DRAWN BY	WRF			SCALE None	PAGE 2 OF 4
CHECKED BY	EK				



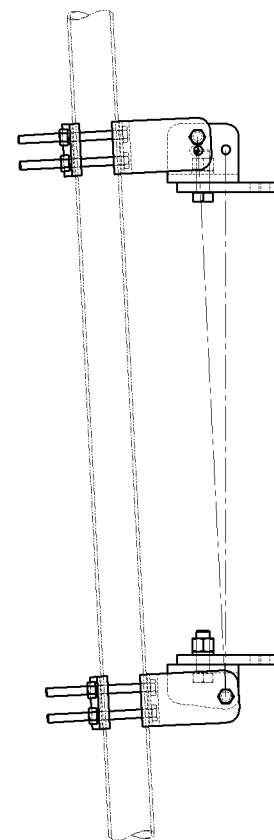
UPPER LEG MOUNTING DETAIL



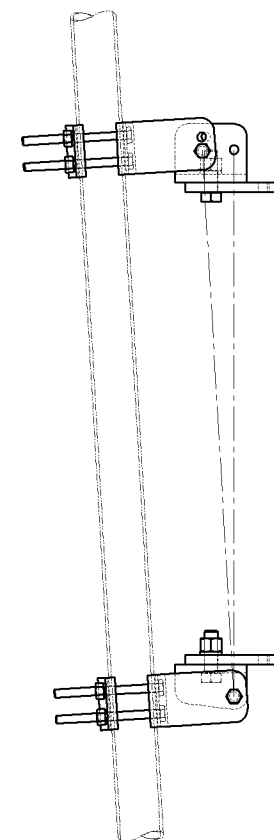
LOWER LEG MOUNTING DETAIL



STRAIGHT  
TOWER SECTION

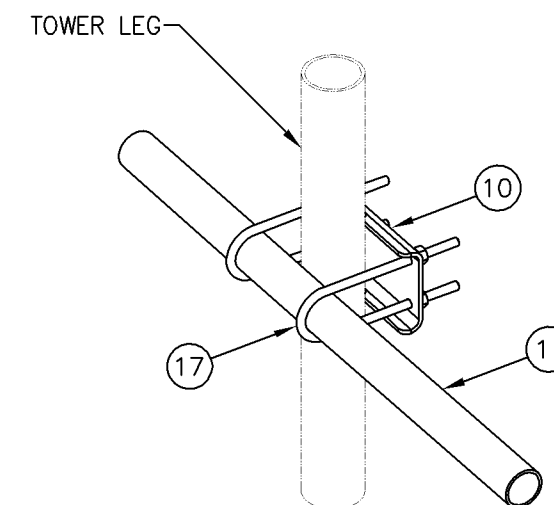


TAPERED  
1'-9 IN 20' SLOPE

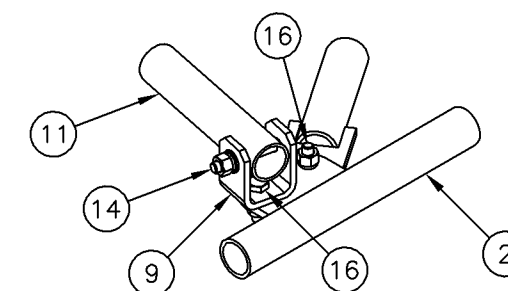


TAPERED  
2' IN 20' SLOPE

-----PIVOTING OPTIONS-----



TIE BACK DETAIL  
AT TOWER LEG



TIE BACK DETAIL  
AT ANTENNA MOUNTING FRAME

Distributed By  
**Rosenberger**  
Rosenberger Site Solutions, LLC  
visit [www.RosenbergerOnline.us](http://www.RosenbergerOnline.us)

UNLESS OTHERWISE SPECIFIED ALL DIMENSIONS INCLUDE FINISHES AND ARE IN INCHES				MATERIAL:			
TOLERANCES: FRACTIONS $\pm 1/16"$ ANGLES $\pm 1/2$ DEG. DECIMALS $\pm .010"$				TOLERANCES DO NOT APPLY TO RAW MATERIAL			
REV	DATE	DRW	CHK	DESCRIPTION			
4	04/28/20	KLE	EK	ADDED NOTE 5 TO GENERAL NOTES.			
3	10/19/16	KLE	DEL	ADDED NOTE 4 TO INSTALLATION NOTES AND ADDED PAGE 4			
2	02/05/16	DLW	DEL	ADDED PACKAGING NOTE			
1	01/21/16	KLE	EK	REVISED NOTES & ADDED TIEBACK ANGLE RANGE DETAIL			

**Sabre Industries™**  
Towers and Poles

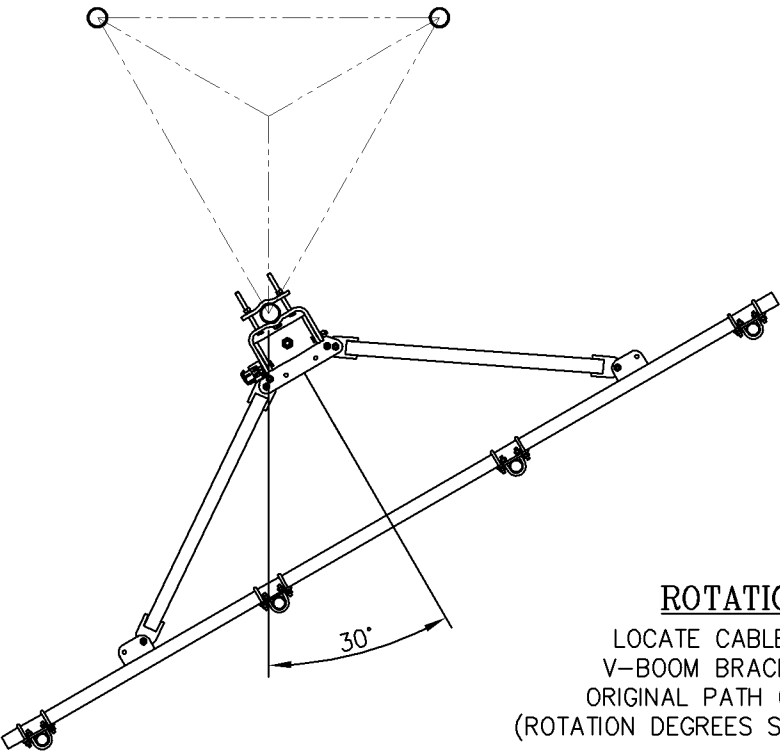
**CONFIDENTIAL**  
This document and the information  
contained herein is the confidential trade  
secret property of Sabre Communications  
Corporation ("Sabre") and must not be  
reproduced, copied or used, in whole or in  
part, for any purpose without the prior  
written consent of Sabre.  
© 2015 Sabre Communications Corporation.  
All rights reserved.

10' HD V-BOOM ASSEMBLY W/TIEBACK  
(3' STANDOFF)  
W/NO ANTENNA MOUNTING PIPES

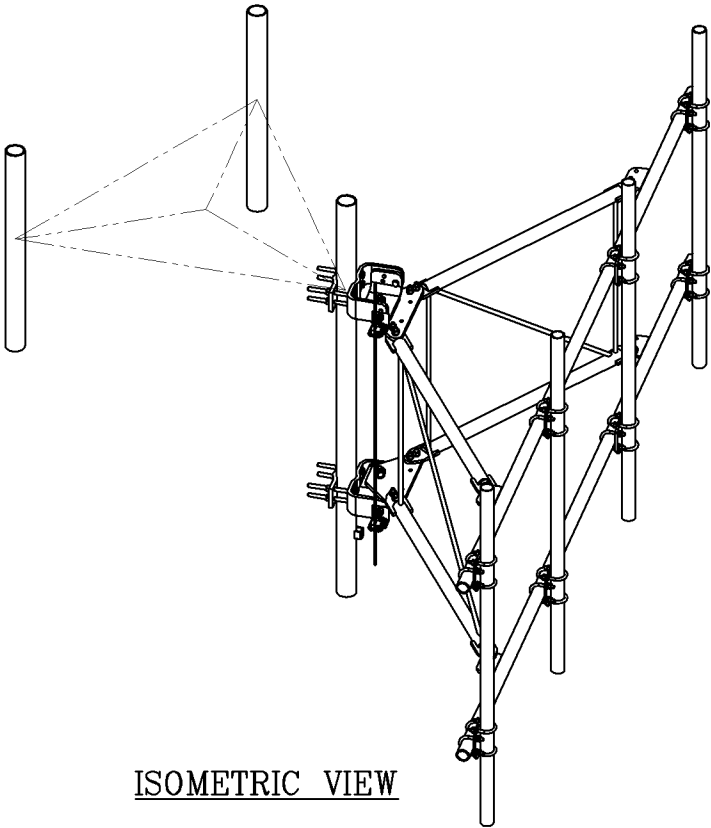
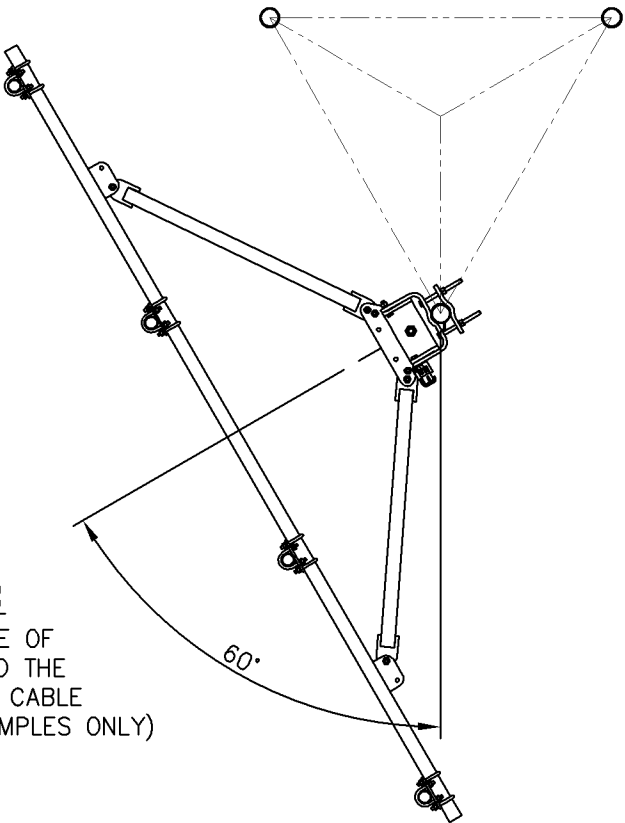
		SIZE B	DRAWING NO. C10857002C		REV 4
DATE	12/22/15				
DRAWN BY	WRF			SCALE None	
CHECKED BY	EK				

OPTIONAL LOCKING CABLE GUIDE

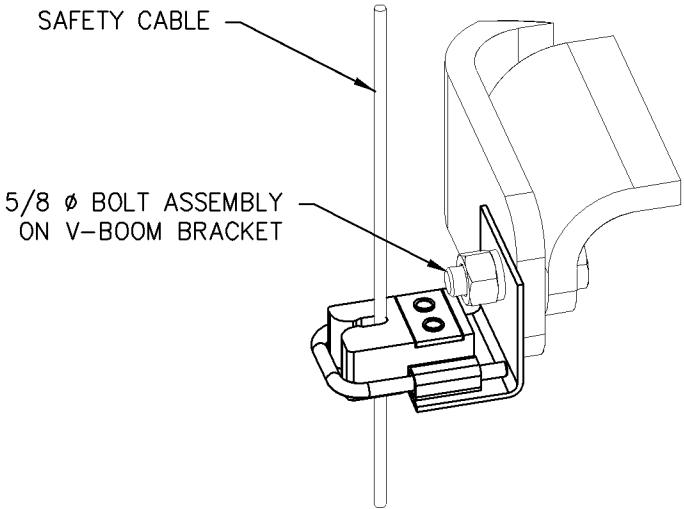
IF REQUIRED PLEASE ORDER PART NUMBER C30017022. THIS KIT WILL COME WITH (2) LOCKING CABLE GUIDES FOR TOP & BOTTOM V-BOOM BRACKETS.



ROTATION OPTIONS  
LOCATE CABLE GUIDE ON SIDE OF V-BOOM BRACKET CLOSEST TO THE ORIGINAL PATH OF THE SAFETY CABLE  
(ROTATION DEGREES SHOWN ARE EXAMPLES ONLY)




ISOMETRIC VIEW



CABLE GUIDE DETAIL

NOTE

OTHER ADDITIONAL CABLE GUIDE SUPPORTS MAY BE REQUIRED ABOVE AND BELOW V-BOOM SO THAT CABLE ALIGNMENT IS WITHIN REQUIRED LIMITS.

UNLESS OTHERWISE SPECIFIED ALL DIMENSIONS INCLUDE FINISHES AND ARE IN INCHES				MATERIAL:		<div><b>Sabre Industries™</b> Towers and Poles</div>	10' HD V-BOOM ASSEMBLY W/TIEBACK (3' STANDOFF) W/NO ANTENNA MOUNTING PIPES				
TOLERANCES: FRACTIONS ± 1/16" ANGLES ± 1/2 DEG. DECIMALS ± .010"				TOLERANCES DO NOT APPLY TO RAW MATERIAL							
<div>CONFIDENTIAL</div> <div>This document and the information contained herein is the confidential trade secret property of Sabre Communications Corporation ("Sabre") and must not be reproduced, copied or used, in whole or in part, for any purpose without the prior written consent of Sabre.</div> <div>© 2015 Sabre Communications Corporation. All rights reserved.</div>						DATE 12/22/15		SIZE B	DRAWING NO. C10857002C		REV 4
DRAWN BY WRF								SCALE None	PAGE 4 OF 4		
CHECKED BY EK											